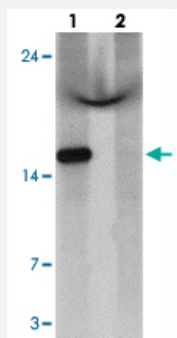


C1orf64 polyclonal antibody

Catalog # PAB27411

Size 100 ug

Applications



Western Blot (Cell lysate)

Western blot analysis of C1orf64 in HeLa cell lysate with C1orf64 polyclonal antibody (Cat # PAB27411) at 1 ug/mL in (lane 1) the absence and (lane 2) the presence of blocking peptide.

Specification

Product Description	Rabbit polyclonal antibody raised against synthetic peptide of C1orf64.
Immunogen	A synthetic peptide corresponding to 15 amino acids at C-terminus of human C1orf64.
Host	Rabbit
Reactivity	Human, Mouse
Form	Liquid
Purification	Peptide affinity purification
Concentration	1 mg/mL
Isotype	IgG
Recommend Usage	Western Blot (1 ug/mL) Immunocytochemistry (2.5 ug/mL) Immunofluorescence (20 ug/mL) The optimal working dilution should be determined by the end user.
Storage Buffer	In PBS (0.02% sodium azide)

Storage Instruction

Store at 4°C for three months. For long term storage store at -20°C.
Aliquot to avoid repeated freezing and thawing.

Note

This product contains sodium azide: a POISONOUS AND HAZARDOUS SUBSTANCE which should be handled by trained staff only.

Applications

- Western Blot (Cell lysate)

Western blot analysis of C1orf64 in HeLa cell lysate with C1orf64 polyclonal antibody (Cat # PAB27411) at 1 ug/mL in (lane 1) the absence and (lane 2) the presence of blocking peptide.

- Immunocytochemistry

- Immunofluorescence

- Enzyme-linked Immunoabsorbent Assay

Gene Info — C1orf64

Entrez GeneID[149563](#)**Protein Accession#**[NP_849162](#)**Gene Name**

C1orf64

Gene Alias

MGC24047, RP11-5P18.4

Gene Description

chromosome 1 open reading frame 64

Gene Ontology[Hyperlink](#)**Other Designations**

OTTHUMP00000011115|hypothetical protein LOC149563