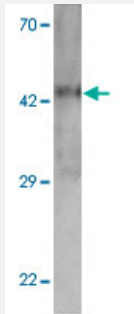


MTERFD2 polyclonal antibody

Catalog # PAB27408

Size 100 ug

Applications



Western Blot (Tissue lysate)

Western blot analysis of MTERFD2 in human small intestine tissue with MTERFD2 polyclonal antibody (Cat # PAB27408) at 1 ug/mL.

Specification

Product Description	Rabbit polyclonal antibody raised against synthetic peptide of MTERFD2.
Immunogen	A synthetic peptide corresponding to 17 amino acids at C-terminus of human MTERFD2.
Host	Rabbit
Reactivity	Human, Mouse, Rat
Specificity	At least three isoforms of MTERFD2 are known to exist. MTERFD2 antibody is predicted to not cross-react with other MTERFD protein family members.
Form	Liquid
Purification	Peptide affinity purification
Concentration	1 mg/mL
Isotype	IgG
Recommend Usage	Western Blot (1 ug/mL) Immunohistochemistry (2.5 ug/mL) Immunofluorescence (20 ug/mL) The optimal working dilution should be determined by the end user.

Storage Buffer	In PBS (0.02% sodium azide)
Storage Instruction	Store at 4°C for three months. For long term storage store at -20°C. Aliquot to avoid repeated freezing and thawing.
Note	This product contains sodium azide: a POISONOUS AND HAZARDOUS SUBSTANCE which should be handled by trained staff only.

Applications

- Western Blot (Tissue lysate)

Western blot analysis of MTERFD2 in human small intestine tissue with MTERFD2 polyclonal antibody (Cat # PAB27408) at 1 ug/mL.

- Immunohistochemistry

- Immunofluorescence

- Enzyme-linked Immunoabsorbent Assay

Gene Info — MTERFD2

Entrez GeneID	130916
Protein Accession#	NP_872307
Gene Name	MTERFD2
Gene Alias	FLJ16261, MGC61716
Gene Description	MTERF domain containing 2
Gene Ontology	Hyperlink
Other Designations	OTTHUMP00000164574