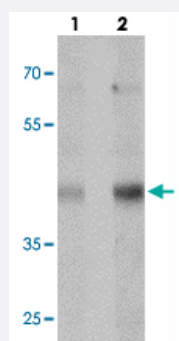


MTERFD1 polyclonal antibody

Catalog # PAB27407 Size 100 ug

Applications



Western Blot (Cell lysate)

Western blot analysis of MTERFD1 in NIH/3T3 cell lysate with MTERFD1 polyclonal antibody (Cat # PAB27407) at (lane 1) 1 and (lane 2) 2 ug/mL.

Specification

Product Description	Rabbit polyclonal antibody raised against synthetic peptide of MTERFD1.
Immunogen	A synthetic peptide corresponding to 17 amino acids at C-terminus of human MTERFD1.
Host	Rabbit
Reactivity	Human, Mouse
Specificity	At least three isoforms of MTERFD1 are known to exist. MTERFD1 antibody is predicted to not cross-react with other MTERFD protein family members.
Form	Liquid
Purification	Peptide affinity purification
Concentration	1 mg/mL
Isotype	IgG
Recommend Usage	Western Blot (1-2 ug/mL) The optimal working dilution should be determined by the end user.
Storage Buffer	In PBS (0.02% sodium azide)

Storage Instruction

Store at 4°C for three months. For long term storage store at -20°C.
Aliquot to avoid repeated freezing and thawing.

Note

This product contains sodium azide: a POISONOUS AND HAZARDOUS SUBSTANCE which should be handled by trained staff only.

Applications

- Western Blot (Cell lysate)

Western blot analysis of MTERFD1 in NIH/3T3 cell lysate with MTERFD1 polyclonal antibody (Cat # PAB27407) at (lane 1) 1 and (lane 2) 2 ug/mL.

- Enzyme-linked Immunoabsorbent Assay

Gene Info — MTERFD1

Entrez GeneID[51001](#)**Protein Accession#**[NP_057026](#)**Gene Name**

MTERFD1

Gene Alias

CGI-12, FLJ10939

Gene Description

MTERF domain containing 1

Gene Ontology[Hyperlink](#)**Other Designations**

-