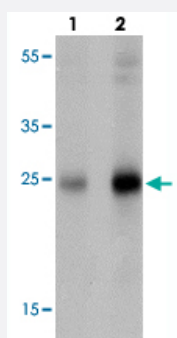


# SHISA4 polyclonal antibody

Catalog # PAB27405

Size 100 ug

## Applications



### Western Blot (Tissue lysate)

Western blot analysis of SHISA4 in human brain tissue with SHISA4 polyclonal antibody (Cat # PAB27405) at (lane 1) 1 and (lane 2) 2 ug/mL.

## Specification

<b>Product Description</b>	Rabbit polyclonal antibody raised against synthetic peptide of SHISA4.
<b>Immunogen</b>	A synthetic peptide corresponding to 15 amino acids at internal region of human SHISA4.
<b>Host</b>	Rabbit
<b>Reactivity</b>	Human, Mouse
<b>Specificity</b>	SHISA4 antibody is predicted to not cross-react with other SHISA protein family members.
<b>Form</b>	Liquid
<b>Purification</b>	Peptide affinity purification
<b>Concentration</b>	1 mg/mL
<b>Isotype</b>	IgG
<b>Recommend Usage</b>	Western Blot (1-2 ug/mL) Immunohistochemistry (2.5 ug/mL) Immunofluorescence (20 ug/mL) The optimal working dilution should be determined by the end user.

Storage Buffer	In PBS (0.02% sodium azide)
Storage Instruction	Store at 4°C for three months. For long term storage store at -20°C. Aliquot to avoid repeated freezing and thawing.
Note	This product contains sodium azide: a POISONOUS AND HAZARDOUS SUBSTANCE which should be handled by trained staff only.

## Applications

- Western Blot (Tissue lysate)

Western blot analysis of SHISA4 in human brain tissue with SHISA4 polyclonal antibody (Cat # PAB27405) at (lane 1) 1 and (lane 2) 2 ug/mL.

- Immunohistochemistry

- Immunofluorescence

- Enzyme-linked Immunoabsorbent Assay

## Gene Info — SHISA4

Entrez GeneID	<a href="#">149345</a>
Protein Accession#	<a href="#">NP_937792</a>
Gene Name	SHISA4
Gene Alias	C1orf40, MGC102893, MGC129812, MGC129813, TMEM58, hShisa4
Gene Description	shisa homolog 4 (Xenopus laevis)
Gene Ontology	<a href="#">Hyperlink</a>
Other Designations	OTTHUMP00000033952 OTTHUMP00000060957 shisa homolog 4 transmembrane protein 58