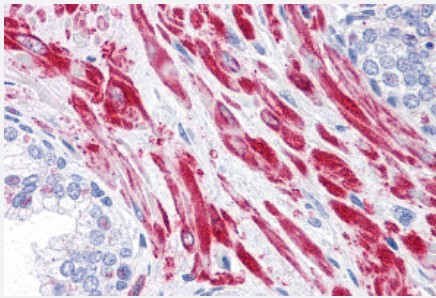


TBC1D4 polyclonal antibody

Catalog # PAB27400 Size 100 ug

Applications



Immunohistochemistry

Immunohistochemical analysis of TBC1D4 in human prostate tissue with TBC1D4 polyclonal antibody (Cat # PAB27400) at 10 ug/mL.

Specification

Product Description	Rabbit polyclonal antibody raised against synthetic peptide of TBC1D4.
Immunogen	A synthetic peptide corresponding to 19 amino acids at C-terminus of human TBC1D4.
Host	Rabbit
Reactivity	Human
Form	Liquid
Purification	Peptide affinity purification
Concentration	1 mg/mL
Isotype	IgG
Recommend Usage	Immunohistochemistry (10 ug/mL) The optimal working dilution should be determined by the end user.
Storage Buffer	In PBS (0.02% sodium azide)
Storage Instruction	Store at 4°C for three months. For long term storage store at -20°C. Aliquot to avoid repeated freezing and thawing.

Note

This product contains sodium azide: a POISONOUS AND HAZARDOUS SUBSTANCE which should be handled by trained staff only.

Applications

- Immunohistochemistry

Immunohistochemical analysis of TBC1D4 in human prostate tissue with TBC1D4 polyclonal antibody (Cat # PAB27400) at 10 ug/mL.

- Enzyme-linked Immunoabsorbent Assay

Gene Info — TBC1D4

Entrez GeneID	9882
Protein Accession#	NP_055647
Gene Name	TBC1D4
Gene Alias	AS160, DKFZp779C0666
Gene Description	TBC1 domain family, member 4
Gene Ontology	Hyperlink
Gene Summary	O
Other Designations	Acrg embryonic lethality minimal region ortholog OTTHUMP00000018505 OTTHUMP00000040818 TBC (Tre-2, BUB2, CDC16) domain-containing protein

Disease

- [Tobacco Use Disorder](#)