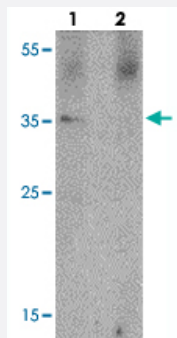


PRKCDBP polyclonal antibody

Catalog # PAB27399

Size 100 ug

Applications



Western Blot (Cell lysate)

Western blot analysis of PRKCDBP in A-20 cell lysate with PRKCDBP polyclonal antibody (Cat # PAB27399) at 1 ug/mL in (lane 1) the absence and (lane 2) the presence of blocking peptide.

Specification

Product Description	Rabbit polyclonal antibody raised against synthetic peptide of PRKCDBP.
Immunogen	A synthetic peptide corresponding to 17 amino acids at internal region of human PRKCDBP.
Host	Rabbit
Reactivity	Human, Mouse
Specificity	It is predicted to not cross-react with other members of the cavin family.
Form	Liquid
Purification	Peptide affinity purification
Concentration	1 mg/mL
Isotype	IgG
Recommend Usage	Western Blot (1-2 ug/mL) Immunohistochemistry (2.5 ug/mL) Immunofluorescence (20 ug/mL) The optimal working dilution should be determined by the end user.

Storage Buffer	In PBS (0.02% sodium azide)
Storage Instruction	Store at 4°C for three months. For long term storage store at -20°C. Aliquot to avoid repeated freezing and thawing.
Note	This product contains sodium azide: a POISONOUS AND HAZARDOUS SUBSTANCE which should be handled by trained staff only.

Applications

- Western Blot (Cell lysate)

Western blot analysis of PRKCDBP in A-20 cell lysate with PRKCDBP polyclonal antibody (Cat # PAB27399) at 1 ug/mL in (lane 1) the absence and (lane 2) the presence of blocking peptide.

- Immunohistochemistry

- Immunofluorescence

- Enzyme-linked Immunoabsorbent Assay

Gene Info — PRKCDBP

Entrez GeneID	112464
Protein Accession#	NP_659477
Gene Name	PRKCDBP
Gene Alias	HSRBC, MGC20400, SRBC
Gene Description	protein kinase C, delta binding protein
Gene Ontology	Hyperlink
Gene Summary	The protein encoded by this gene was identified as a binding protein of the protein kinase C, delta (PRKCD). The expression of this gene in cultured cell lines is strongly induced by serum starvation. The expression of this protein was found to be down-regulated in various cancer cell lines, suggesting the possible tumor suppressor function of this protein. [provided by RefSeq]
Other Designations	sdr-related gene product that binds to c-kinase

Disease

- [Cardiovascular Diseases](#)
- [Carotid Stenosis](#)
- [Diabetes Mellitus](#)
- [Edema](#)
- [Genetic Predisposition to Disease](#)
- [Kidney Failure](#)