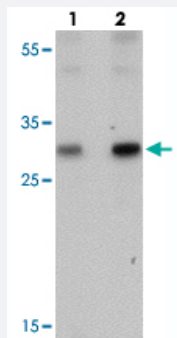


# PTRF polyclonal antibody

Catalog # PAB27398      Size 100 ug

## Applications



### Western Blot (Tissue lysate)

Western blot analysis of PTRF in human spleen tissue with PTRF polyclonal antibody (Cat # PAB27398) at (lane 1) 0.5 and (lane 2) 1 ug/mL.

## Specification

<b>Product Description</b>	Rabbit polyclonal antibody raised against synthetic peptide of PTRF.
<b>Immunogen</b>	A synthetic peptide corresponding to 19 amino acids at C-terminus of human PTRF.
<b>Host</b>	Rabbit
<b>Reactivity</b>	Human
<b>Specificity</b>	At least three isoforms of PTRF are known to exist; this antibody detects all three isoforms. It is predicted to not cross-react with other members of the cavin family.
<b>Form</b>	Liquid
<b>Purification</b>	Peptide affinity purification
<b>Concentration</b>	1 mg/mL
<b>Isotype</b>	IgG
<b>Recommend Usage</b>	Western Blot (0.5-1 ug/mL) Immunohistochemistry (5 ug/mL) Immunofluorescence (20 ug/mL) The optimal working dilution should be determined by the end user.

Storage Buffer	In PBS (0.02% sodium azide)
Storage Instruction	Store at 4°C for three months. For long term storage store at -20°C. Aliquot to avoid repeated freezing and thawing.
Note	This product contains sodium azide: a POISONOUS AND HAZARDOUS SUBSTANCE which should be handled by trained staff only.

## Applications

- Western Blot (Tissue lysate)

Western blot analysis of PTRF in human spleen tissue with PTRF polyclonal antibody (Cat # PAB27398) at (lane 1) 0.5 and (lane 2) 1 ug/mL.

- Immunohistochemistry
- Immunofluorescence
- Enzyme-linked Immunoabsorbent Assay

## Gene Info — PTRF

Entrez GeneID	<a href="#">284119</a>
Protein Accession#	<a href="#">NP_036364</a>
Gene Name	PTRF
Gene Alias	FKSG13
Gene Description	polymerase I and transcript release factor
Omim ID	<a href="#">603198</a>
Gene Ontology	<a href="#">Hyperlink</a>
Other Designations	RNA polymerase I and transcript release factor TTF-I interacting peptide 12

## Disease

- [Colitis](#)

- [Crohn Disease](#)
- [Genetic Predisposition to Disease](#)