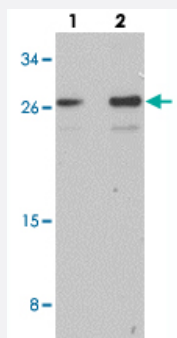


# RRAS2 polyclonal antibody

Catalog # PAB27393      Size 100 ug

## Applications



### Western Blot (Cell lysate)

Western blot analysis of RRAS2 in Jurkat cell lysate with RRAS2 polyclonal antibody (Cat # PAB27393) at (lane 1) 1 and (lane 2) 2 ug/mL.

## Specification

<b>Product Description</b>	Rabbit polyclonal antibody raised against synthetic peptide of RRAS2.
<b>Immunogen</b>	A synthetic peptide corresponding to 16 amino acids at C-terminus of human RRAS2.
<b>Host</b>	Rabbit
<b>Reactivity</b>	Human, Mouse
<b>Specificity</b>	Two isoforms of RRAS2 exists as a result of alternative splicing event.
<b>Form</b>	Liquid
<b>Purification</b>	Peptide affinity purification
<b>Concentration</b>	1 mg/mL
<b>Isotype</b>	IgG
<b>Recommend Usage</b>	Western Blot (1-2 ug/mL) The optimal working dilution should be determined by the end user.
<b>Storage Buffer</b>	In PBS (0.02% sodium azide)

**Storage Instruction**

Store at 4°C for three months. For long term storage store at -20°C.  
Aliquot to avoid repeated freezing and thawing.

**Note**

This product contains sodium azide: a POISONOUS AND HAZARDOUS SUBSTANCE which should be handled by trained staff only.

## Applications

- Western Blot (Cell lysate)

Western blot analysis of RRAS2 in Jurkat cell lysate with RRAS2 polyclonal antibody (Cat # PAB27393) at (lane 1) 1 and (lane 2) 2 ug/mL.

- Enzyme-linked Immunoabsorbent Assay

## Gene Info — RRAS2

**Entrez GeneID** [22800](#)

**Protein Accession#** [NP\\_036382](#)

**Gene Name** RRAS2

**Gene Alias** TC21

**Gene Description** related RAS viral (r-ras) oncogene homolog 2

**Omim ID** [600098](#)

**Gene Ontology** [Hyperlink](#)

**Other Designations** oncogene TC21

## Pathway

- [MAPK signaling pathway](#)
- [Regulation of actin cytoskeleton](#)
- [Tight junction](#)

## Disease

- [Breast cancer](#)
- [Breast Neoplasms](#)
- [Genetic Predisposition to Disease](#)
- [Parkinson disease](#)