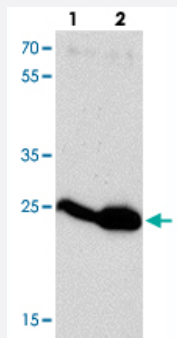


HIV-1 p24 polyclonal antibody

Catalog # PAB27384 Size 100 ug

Applications



Western Blot (Recombinant protein)

Western blot analysis of HIV-1 p24 with HIV-1 p24 polyclonal antibody (Cat # PAB27384) at 0.5 ug/mL to detect (lane 1) 2 ng and (lane 2) 10 ng of recombinant HIV-1 p24.

Specification

Product Description	Rabbit polyclonal antibody raised against full length recombinant HIV-1 p24.
Immunogen	Recombinant protein corresponding to human immunodeficiency virus type 1 p24.
Host	Rabbit
Reactivity	Viruses
Specificity	In HIV-1 samples, p24 antibody detects a ~24 kDa, a ~41 kDa, and a ~55 kDa protein, corresponding to HIV-1 p24 and its precursors p41 and p55, respectively.
Form	Liquid
Purification	Peptide affinity purification
Concentration	1 mg/mL
Isotype	IgG
Recommend Usage	Western Blot (0.5-1 ug/mL) The optimal working dilution should be determined by the end user.
Storage Buffer	In PBS (0.02% sodium azide)

Storage Instruction

Store at 4°C for three months. For long term storage store at -20°C.
Aliquot to avoid repeated freezing and thawing.

Note

This product contains sodium azide: a POISONOUS AND HAZARDOUS SUBSTANCE which should be handled by trained staff only.

Applications

- Western Blot (Recombinant protein)

Western blot analysis of HIV-1 p24 with HIV-1 p24 polyclonal antibody (Cat # PAB27384) at 0.5 ug/mL to detect (lane 1) 2 ng and (lane 2) 10 ng of recombinant HIV-1 p24.

- Enzyme-linked Immunoabsorbent Assay