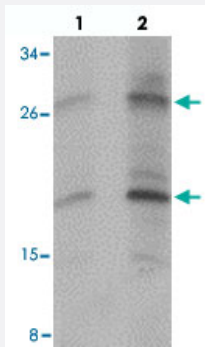


# PDGFB polyclonal antibody

Catalog # PAB27227      Size 100 ug

## Applications



### Western Blot (Tissue lysate)

Western blot analysis of PDGFB in rat liver tissue with PDGFB polyclonal antibody (Cat # PAB27227) at (lane 1) 1 and (lane 2) 2 ug/mL.

## Specification

<b>Product Description</b>	Rabbit polyclonal antibody raised against synthetic peptide of PDGFB.
<b>Immunogen</b>	A synthetic peptide corresponding to 19 amino acids at C-terminus of human PDGFB.
<b>Host</b>	Rabbit
<b>Reactivity</b>	Human, Mouse, Rat
<b>Form</b>	Liquid
<b>Purification</b>	Peptide affinity purification
<b>Concentration</b>	1 mg/mL
<b>Isotype</b>	IgG
<b>Recommend Usage</b>	Western Blot (1-2 ug/mL) Immunofluorescence (20 ug/mL) The optimal working dilution should be determined by the end user.
<b>Storage Buffer</b>	In PBS (0.02% sodium azide)

**Storage Instruction**

Store at 4°C for three months. For long term storage store at -20°C.  
Aliquot to avoid repeated freezing and thawing.

**Note**

This product contains sodium azide: a POISONOUS AND HAZARDOUS SUBSTANCE which should be handled by trained staff only.

## Applications

- Western Blot (Tissue lysate)

Western blot analysis of PDGFB in rat liver tissue with PDGFB polyclonal antibody (Cat # PAB27227) at (lane 1) 1 and (lane 2) 2 ug/mL.

- Immunofluorescence

- Enzyme-linked Immunoabsorbent Assay

## Gene Info — PDGFB

**Entrez GeneID** [5155](#)

**Protein Accession#** [NP\\_002599](#)

**Gene Name** PDGFB

**Gene Alias** FLJ12858, PDGF2, SIS, SSV, c-sis

**Gene Description** platelet-derived growth factor beta polypeptide (simian sarcoma viral (v-sis) oncogene homolog)

**Omim ID** [190040](#)

**Gene Ontology** [Hyperlink](#)

**Gene Summary**

The protein encoded by this gene is a member of the platelet-derived growth factor family. The four members of this family are mitogenic factors for cells of mesenchymal origin and are characterized by a motif of eight cysteines. This gene product can exist either as a homodimer (PDGF-BB) or as a heterodimer with the platelet-derived growth factor alpha polypeptide (PDGF-AB), where the dimers are connected by disulfide bonds. Mutations in this gene are associated with meningioma. Reciprocal translocations between chromosomes 22 and 7, at sites where this gene and that for COL1A1 are located, are associated with a particular type of skin tumor called dermatofibrosarcoma protuberans resulting from unregulated expression of growth factor. Two alternatively spliced transcript variants encoding different isoforms have been identified for this gene. [provided by RefSeq]

**Other Designations**

PDGF, B chain|Platelet-derived growth factor, beta polypeptide (oncogene SIS)|becaplermin|oncogene SIS|platelet-derived growth factor 2|platelet-derived growth factor beta|platelet-derived growth factor, B chain|v-sis platelet-derived growth factor beta p

## Pathway

- [Cytokine-cytokine receptor interaction](#)
- [Focal adhesion](#)
- [Gap junction](#)
- [Glioma](#)
- [MAPK signaling pathway](#)
- [Melanoma](#)
- [Pathways in cancer](#)
- [Prostate cancer](#)
- [Regulation of actin cytoskeleton](#)
- [Renal cell carcinoma](#)

## Disease

- [Amyotrophic lateral sclerosis](#)
- [Anoxia](#)
- [Carcinoma](#)
- [Cardiovascular Diseases](#)
- [Chorioamnionitis](#)
- [Coronary Artery Disease](#)
- [Diabetes Mellitus](#)
- [Disease Progression](#)
- [Edema](#)

- [Fetal Membranes](#)
- [Genetic Predisposition to Disease](#)
- [Glomerulonephritis](#)
- [Head and Neck Neoplasms](#)
- [Neoplasms](#)
- [Obstetric Labor](#)
- [Ovarian Neoplasms](#)
- [Pre-Eclampsia](#)
- [Premature Birth](#)
- [Recurrence](#)