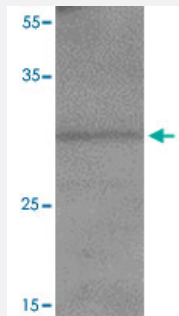


VTCN1 polyclonal antibody

Catalog # PAB27222 Size 100 ug

Applications



Western Blot (Cell lysate)

Western blot analysis of VTCN1 in EL4 cell lysate with VTCN1 polyclonal antibody (Cat # PAB27222) at 1 ug/mL.

Specification

Product Description	Rabbit polyclonal antibody raised against synthetic peptide of VTCN1.
Immunogen	A synthetic peptide corresponding to 18 amino acids at internal region of human VTCN1.
Host	Rabbit
Reactivity	Human, Mouse
Form	Liquid
Purification	Peptide affinity purification
Concentration	1 mg/mL
Isotype	IgG
Recommend Usage	Western Blot (1 ug/mL) The optimal working dilution should be determined by the end user.
Storage Buffer	In PBS (0.02% sodium azide)
Storage Instruction	Store at 4°C for three months. For long term storage store at -20°C. Aliquot to avoid repeated freezing and thawing.

Note

This product contains sodium azide: a POISONOUS AND HAZARDOUS SUBSTANCE which should be handled by trained staff only.

Applications

- Western Blot (Cell lysate)

Western blot analysis of VTCN1 in EL4 cell lysate with VTCN1 polyclonal antibody (Cat # PAB27222) at 1 ug/mL.

- Enzyme-linked Immunoabsorbent Assay

Gene Info — VTCN1

Entrez GeneID [79679](#)

Protein Accession# [NP_078902](#)

Gene Name VTCN1

Gene Alias B7-H4, B7H4, B7S1, B7X, B7h.5, FLJ22418, PRO1291, RP11-229A19.4, VCTN1

Gene Description V-set domain containing T cell activation inhibitor 1

Omim ID [608162](#)

Gene Ontology [Hyperlink](#)

Gene Summary B7H4 belongs to the B7 family (see CD80; MIM 112203) of costimulatory proteins. These proteins are expressed on the surface of antigen-presenting cells and interact with ligands (e.g., CD28; MIM 186760) on T lymphocytes.[supplied by OMIM]

Other Designations OTTHUMP00000013947|T cell costimulatory molecule B7x|immune costimulatory protein B7-H4

Disease

- [Arthritis](#)
- [Breast Neoplasms](#)
- [Genetic Predisposition to Disease](#)