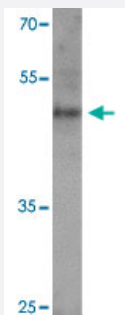


BCL3 polyclonal antibody

Catalog # PAB27219

Size 100 ug

Applications



Western Blot (Cell lysate)

Western blot analysis of BCL3 in 293 cell lysate with BCL3 polyclonal antibody (Cat # PAB27219) at 1 ug/mL.

Specification

Product Description	Rabbit polyclonal antibody raised against synthetic peptide of BCL3.
Immunogen	A synthetic peptide corresponding to 17 amino acids at C-terminus of human BCL3.
Host	Rabbit
Reactivity	Human
Form	Liquid
Purification	Peptide affinity purification
Concentration	1 mg/mL
Isotype	IgG
Recommend Usage	Western Blot (1 ug/mL) The optimal working dilution should be determined by the end user.
Storage Buffer	In PBS (0.02% sodium azide)
Storage Instruction	Store at 4°C for three months. For long term storage store at -20°C. Aliquot to avoid repeated freezing and thawing.

Note

This product contains sodium azide: a POISONOUS AND HAZARDOUS SUBSTANCE which should be handled by trained staff only.

Applications

- Western Blot (Cell lysate)

Western blot analysis of BCL3 in 293 cell lysate with BCL3 polyclonal antibody (Cat # PAB27219) at 1 ug/mL.

- Enzyme-linked Immunoabsorbent Assay

Gene Info — BCL3

Entrez GeneID [602](#)

Protein Accession# [NP_005169](#)

Gene Name BCL3

Gene Alias BCL4, D19S37

Gene Description B-cell CLL/lymphoma 3

Omim ID [109560](#)

Gene Ontology [Hyperlink](#)

Gene Summary This gene is a proto-oncogene candidate. It is identified by its translocation into the immunoglobulin alpha-locus in some cases of B-cell leukemia. The protein encoded by this gene contains seven ankyrin repeats, which are most closely related to those found in I kappa B proteins. This protein functions as a transcriptional co-activator that activates through its association with NF-kappa B homodimers. The expression of this gene can be induced by NF-kappa B, which forms a part of the autoregulatory loop that controls the nuclear residence of p50 NF-kappa B. [provided by RefSeq]

Other Designations B-cell leukemia/lymphoma 3|B-cell lymphoma 3-encoded protein|chronic lymphatic leukemia protein

Disease

- [Cardiovascular Diseases](#)

- [Cleft Lip](#)

- [Cleft Palate](#)
- [Crohn Disease](#)
- [Disease Models](#)
- [Genetic Predisposition to Disease](#)