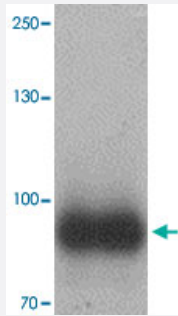


# IL17RE polyclonal antibody

Catalog # PAB27218      Size 100 ug

## Applications



### Western Blot (Tissue lysate)

Western blot analysis of IL17RE in human ovary tissue with IL17RE polyclonal antibody (Cat # PAB27218) at 1 ug/mL.

## Specification

<b>Product Description</b>	Rabbit polyclonal antibody raised against synthetic peptide of IL17RE.
<b>Immunogen</b>	A synthetic peptide corresponding to 16 amino acids at internal region of human IL17RE.
<b>Host</b>	Rabbit
<b>Reactivity</b>	Human, Mouse, Rat
<b>Form</b>	Liquid
<b>Purification</b>	Peptide affinity purification
<b>Concentration</b>	1 mg/mL
<b>Isotype</b>	IgG
<b>Recommend Usage</b>	Western Blot (1 ug/mL) The optimal working dilution should be determined by the end user.
<b>Storage Buffer</b>	In PBS (0.02% sodium azide)
<b>Storage Instruction</b>	Store at 4°C for three months. For long term storage store at -20°C. Aliquot to avoid repeated freezing and thawing.

**Note**

This product contains sodium azide: a POISONOUS AND HAZARDOUS SUBSTANCE which should be handled by trained staff only.

## Applications

- Western Blot (Tissue lysate)

Western blot analysis of IL17RE in human ovary tissue with IL17RE polyclonal antibody (Cat # PAB27218) at 1 ug/mL.

- Enzyme-linked Immunoabsorbent Assay

## Gene Info — IL17RE

**Entrez GeneID** [132014](#)

**Protein Accession#** [NP\\_705616](#)

**Gene Name** IL17RE

**Gene Alias** FLJ23658, MGC71884

**Gene Description** interleukin 17 receptor E

**Gene Ontology** [Hyperlink](#)

**Gene Summary** This gene encodes a protein that shares limited similarity with the interleukin-17 receptor. The function of the encoded protein has not yet been determined. Three alternatively spliced transcript variants of this gene encoding two distinct isoforms have been reported. [provided by RefSeq]

**Other Designations** OTTHUMP00000158822

## Disease

- [Genetic Predisposition to Disease](#)
- [Malaria](#)