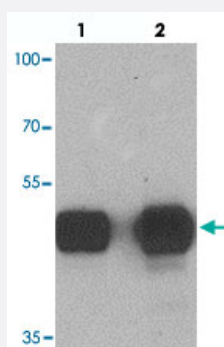


TUBA3C polyclonal antibody

Catalog # PAB27215 Size 100 ug

Applications



Western Blot (Tissue lysate)

Western blot analysis of TUBA3C in mouse brain tissue with TUBA3C polyclonal antibody (Cat # PAB27215) at (lane 1) 0.5 and (lane 2) 1 ug/mL.

Specification

Product Description	Rabbit polyclonal antibody raised against synthetic peptide of TUBA3C.
Immunogen	A synthetic peptide corresponding to 16 amino acids at N-terminus of human TUBA3C.
Host	Rabbit
Reactivity	Human, Mouse, Rat
Form	Liquid
Purification	Peptide affinity purification
Concentration	1 mg/mL
Isotype	IgG
Recommend Usage	Western Blot (0.5-1 ug/mL) The optimal working dilution should be determined by the end user.
Storage Buffer	In PBS (0.02% sodium azide)

Storage Instruction

Store at 4°C for three months. For long term storage store at -20°C.
Aliquot to avoid repeated freezing and thawing.

Note

This product contains sodium azide: a POISONOUS AND HAZARDOUS SUBSTANCE which should be handled by trained staff only.

Applications

- Western Blot (Tissue lysate)

Western blot analysis of TUBA3C in mouse brain tissue with TUBA3C polyclonal antibody (Cat # PAB27215) at (lane 1) 0.5 and (lane 2) 1 ug/mL.

- Enzyme-linked Immunoabsorbent Assay

Gene Info — TUBA3C

Entrez GeneID[7278](#)**Protein Accession#**[NP_005992](#)**Gene Name**

TUBA3C

Gene Alias

TUBA2, bA408E5.3

Gene Description

tubulin, alpha 3c

Omim ID[602528](#)**Gene Ontology**[Hyperlink](#)**Gene Summary**

Microtubules of the eukaryotic cytoskeleton perform essential and diverse functions and are composed of a heterodimer of alpha and beta tubulin. The genes encoding these microtubule constituents are part of the tubulin superfamily, which is composed of six distinct families. Genes from the alpha, beta and gamma tubulin families are found in all eukaryotes. The alpha and beta tubulins represent the major components of microtubules, while gamma tubulin plays a critical role in the nucleation of microtubule assembly. There are multiple alpha and beta tubulin genes and they are highly conserved among and between species. This gene is an alpha tubulin gene that encodes a protein 99% identical to the mouse testis-specific Tuba3 and Tuba7 gene products. This gene is located in the 13q11 region, which is associated with the genetic diseases Clouston hidrotic ectodermal dysplasia and Kabuki syndrome. [provided by RefSeq]

Other Designations

tubulin, alpha 2

Pathway

- [Gap junction](#)
- [Pathogenic Escherichia coli infection - EHEC](#)