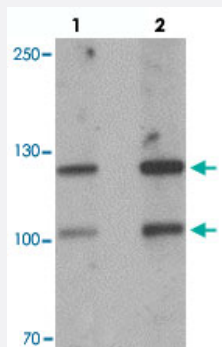


CRB2 polyclonal antibody

Catalog # PAB27210 Size 100 ug

Applications



Western Blot (Tissue lysate)

Western blot analysis of CRB2 in rat brain tissue with CRB2 polyclonal antibody (Cat # PAB27210) at 1 ug/mL.

Specification

Product Description	Rabbit polyclonal antibody raised against synthetic peptide of CRB2.
Immunogen	A synthetic peptide corresponding to 17 amino acids at internal region of human CRB2.
Host	Rabbit
Reactivity	Human, Mouse
Specificity	At least three isoforms of CRB2 are known to exist; this antibody will detect all three. CRB2 antibody is predicted to not cross-react with other members of the CRB family.
Form	Liquid
Purification	Peptide affinity purification
Concentration	1 mg/mL
Isotype	IgG
Recommend Usage	Western Blot (1 ug/mL) The optimal working dilution should be determined by the end user.
Storage Buffer	In PBS (0.02% sodium azide)

Storage Instruction

Store at 4°C for three months. For long term storage store at -20°C.
Aliquot to avoid repeated freezing and thawing.

Note

This product contains sodium azide: a POISONOUS AND HAZARDOUS SUBSTANCE which should be handled by trained staff only.

Applications

- Western Blot (Tissue lysate)

Western blot analysis of CRB2 in rat brain tissue with CRB2 polyclonal antibody (Cat # PAB27210) at 1 ug/mL.

- Enzyme-linked Immunoabsorbent Assay

Gene Info — CRB2

Entrez GeneID[286204](#)**Protein Accession#**[NP_775960](#)**Gene Name**

CRB2

Gene Alias

FLJ16786, FLJ38464

Gene Description

crumbs homolog 2 (Drosophila)

Omim ID[609720](#)**Gene Ontology**[Hyperlink](#)**Other Designations**

OTTHUMP00000022087|OTTHUMP00000064121|crumbs homolog 2|crumbs-like protein 2

Disease

- [Cleft Lip](#)
- [Cleft Palate](#)