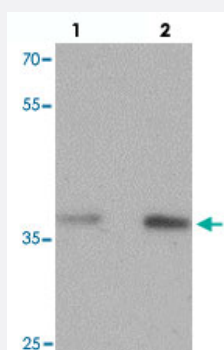


MECR polyclonal antibody

Catalog # PAB27208 Size 100 ug

Applications



Western Blot (Tissue lysate)

Western blot analysis of MECR in human brain tissue with MECR polyclonal antibody (Cat # PAB27208) at (lane 1) 1 and (lane 2) 2 ug/mL.

Specification

Product Description	Rabbit polyclonal antibody raised against synthetic peptide of MECR.
Immunogen	A synthetic peptide corresponding to 15 amino acids at C-terminus of human MECR.
Host	Rabbit
Reactivity	Human, Mouse, Rat
Specificity	At least two isoforms of MECR are known to exist; this antibody will detect both isoforms.
Form	Liquid
Purification	Peptide affinity purification
Concentration	1 mg/mL
Isotype	IgG
Recommend Usage	Western Blot (1-2 ug/mL) The optimal working dilution should be determined by the end user.
Storage Buffer	In PBS (0.02% sodium azide)

Storage Instruction

Store at 4°C for three months. For long term storage store at -20°C.
Aliquot to avoid repeated freezing and thawing.

Note

This product contains sodium azide: a POISONOUS AND HAZARDOUS SUBSTANCE which should be handled by trained staff only.

Applications

- Western Blot (Tissue lysate)

Western blot analysis of MECR in human brain tissue with MECR polyclonal antibody (Cat # PAB27208) at (lane 1) 1 and (lane 2) 2 ug/mL.

- Enzyme-linked Immunoabsorbent Assay

Gene Info — MECR

Entrez GeneID [51102](#)

Protein Accession# [NP_057095](#)

Gene Name MECR

Gene Alias CGI-63, FASN2B, NRBF1

Gene Description mitochondrial trans-2-enoyl-CoA reductase

Omim ID [608205](#)

Gene Ontology [Hyperlink](#)

Gene Summary mitochondrial

Other Designations OTTHUMP00000065098|OTTHUMP00000065099|homolog of yeast 2-enoyl thioester reductase|mitochondrial 2-enoyl thioester reductase|nuclear receptor binding factor 1|trans-2-enoyl-CoA reductase, mitochondrial

Pathway

- [Fatty acid elongation in mitochondria](#)
- [Metabolic pathways](#)