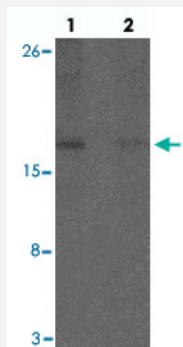


# CHCHD7 polyclonal antibody

Catalog # PAB27205      Size 100 ug

## Applications



### Western Blot (Tissue lysate)

Western blot analysis of CHCHD7 in rat liver tissue with CHCHD7 polyclonal antibody (Cat # PAB27205) at 1 ug/mL in (lane 1) the absence and (lane 2) the presence of blocking peptide.

## Specification

<b>Product Description</b>	Rabbit polyclonal antibody raised against synthetic peptide of CHCHD7.
<b>Immunogen</b>	A synthetic peptide corresponding to 15 amino acids at C-terminus of human CHCHD7.
<b>Host</b>	Rabbit
<b>Reactivity</b>	Human, Mouse, Rat
<b>Specificity</b>	Three alternatively spliced transcript variants have been observed. CHCHD7 is predicted to not cross-react to other members of the CHCHD family.
<b>Form</b>	Liquid
<b>Purification</b>	Peptide affinity purification
<b>Concentration</b>	1 mg/mL
<b>Isotype</b>	IgG
<b>Recommend Usage</b>	Western Blot (1 ug/mL) The optimal working dilution should be determined by the end user.
<b>Storage Buffer</b>	In PBS (0.02% sodium azide)

**Storage Instruction**

Store at 4°C for three months. For long term storage store at -20°C.  
Aliquot to avoid repeated freezing and thawing.

**Note**

This product contains sodium azide: a POISONOUS AND HAZARDOUS SUBSTANCE which should be handled by trained staff only.

## Applications

- Western Blot (Tissue lysate)

Western blot analysis of CHCHD7 in rat liver tissue with CHCHD7 polyclonal antibody (Cat # PAB27205) at 1 ug/mL in (lane 1) the absence and (lane 2) the presence of blocking peptide.

- Enzyme-linked Immunoabsorbent Assay

## Gene Info — CHCHD7

Entrez GeneID [79145](#)

Protein Accession# [NP\\_077276](#)

Gene Name CHCHD7

Gene Alias FLJ40966, MGC2217

Gene Description coiled-coil-helix-coiled-coil-helix domain containing 7

Omim ID [611238](#)

Gene Ontology [Hyperlink](#)

Other Designations OTTHUMP00000082719

## Disease

- [Diabetes Mellitus](#)