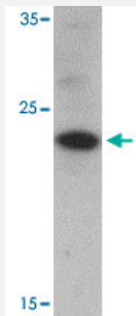


CHCHD6 polyclonal antibody

Catalog # PAB27204

Size 100 ug

Applications



Western Blot (Cell lysate)

Western blot analysis of CHCHD6 in SK-N-SH cell lysate with CHCHD6 polyclonal antibody (Cat # PAB27204) at 1 ug/mL.

Specification

Product Description	Rabbit polyclonal antibody raised against synthetic peptide of CHCHD6.
Immunogen	A synthetic peptide corresponding to 17 amino acids at N-terminus of human CHCHD6.
Host	Rabbit
Reactivity	Human
Specificity	CHCHD6 is predicted to not cross-react to other members of the CHCHD family.
Form	Liquid
Purification	Peptide affinity purification
Concentration	1 mg/mL
Isotype	IgG
Recommend Usage	Western Blot (1 ug/mL) The optimal working dilution should be determined by the end user.
Storage Buffer	In PBS (0.02% sodium azide)

Storage Instruction

Store at 4°C for three months. For long term storage store at -20°C.
Aliquot to avoid repeated freezing and thawing.

Note

This product contains sodium azide: a POISONOUS AND HAZARDOUS SUBSTANCE which should be handled by trained staff only.

Applications

- Western Blot (Cell lysate)

Western blot analysis of CHCHD6 in SK-N-SH cell lysate with CHCHD6 polyclonal antibody (Cat # PAB27204) at 1 ug/mL.

- Enzyme-linked Immunoabsorbent Assay

Gene Info — CHCHD6

Entrez GeneID [84303](#)

Protein Accession# [NP_115719](#)

Gene Name CHCHD6

Gene Alias MGC13016

Gene Description coiled-coil-helix-coiled-coil-helix domain containing 6

Gene Ontology [Hyperlink](#)

Other Designations -

Disease

- [Celiac Disease](#)
- [Genetic Predisposition to Disease](#)
- [Tobacco Use Disorder](#)