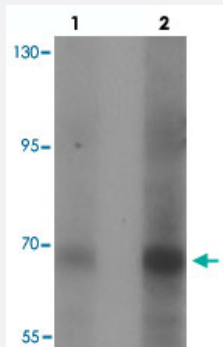


CCDC22 polyclonal antibody

Catalog # PAB27201 Size 100 ug

Applications



Western Blot (Cell lysate)

Western blot analysis of CCDC22 in 293 cell lysate with CCDC22 polyclonal antibody (Cat # PAB27201) at (lane 1) 1 and (lane 2) 2 ug/mL.

Specification

Product Description	Rabbit polyclonal antibody raised against synthetic peptide of CCDC22.
Immunogen	A synthetic peptide corresponding to 18 amino acids at N-terminus of human CCDC22.
Host	Rabbit
Reactivity	Human, Mouse, Rat
Specificity	At least three isoforms of CCDC22 are known to exist; this antibody will detect the two largest isoforms.
Form	Liquid
Purification	Peptide affinity purification
Concentration	1 mg/mL
Isotype	IgG
Recommend Usage	Western Blot (1-2 ug/mL) The optimal working dilution should be determined by the end user.
Storage Buffer	In PBS (0.02% sodium azide)

Storage Instruction

Store at 4°C for three months. For long term storage store at -20°C.
Aliquot to avoid repeated freezing and thawing.

Note

This product contains sodium azide: a POISONOUS AND HAZARDOUS SUBSTANCE which should be handled by trained staff only.

Applications

- Western Blot (Cell lysate)

Western blot analysis of CCDC22 in 293 cell lysate with CCDC22 polyclonal antibody (Cat # PAB27201) at (lane 1) 1 and (lane 2) 2 ug/mL.

- Immunofluorescence
- Enzyme-linked Immunoabsorbent Assay

Gene Info — CCDC22

Entrez GeneID[28952](#)**Protein Accession#**[NP_055588](#)**Gene Name**

CCDC22

Gene Alias

CXorf37, JM1

Gene Description

coiled-coil domain containing 22

Gene Ontology[Hyperlink](#)**Other Designations**

OTTHUMP00000025839

Disease

- [Alzheimer disease](#)
- [Cerebral Amyloid Angiopathy](#)
- [Genetic Predisposition to Disease](#)
- [Neuroblastoma](#)

- [Rhinitis](#)