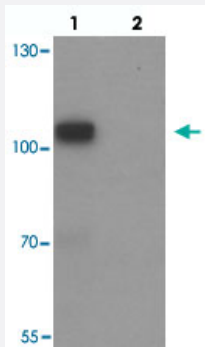


CASK polyclonal antibody

Catalog # PAB27198 Size 100 ug

Applications



Western Blot (Tissue lysate)

Western blot analysis of CASK in mouse brain tissue with CASK polyclonal antibody (Cat # PAB27198) at 1 ug/mL in (lane 1) the absence and (lane 2) the presence of blocking peptide.

Specification

Product Description	Rabbit polyclonal antibody raised against synthetic peptide of CASK.
Immunogen	A synthetic peptide corresponding to 16 amino acids at N-terminus of human CASK.
Host	Rabbit
Reactivity	Human, Mouse, Rat
Specificity	At least six alternatively spliced transcript variants have been observed.
Form	Liquid
Purification	Peptide affinity purification
Concentration	1 mg/mL
Isotype	IgG
Recommend Usage	Western Blot (1 ug/mL) The optimal working dilution should be determined by the end user.
Storage Buffer	In PBS (0.02% sodium azide)

Storage Instruction

Store at 4°C for three months. For long term storage store at -20°C.
Aliquot to avoid repeated freezing and thawing.

Note

This product contains sodium azide: a POISONOUS AND HAZARDOUS SUBSTANCE which should be handled by trained staff only.

Applications

- Western Blot (Tissue lysate)

Western blot analysis of CASK in mouse brain tissue with CASK polyclonal antibody (Cat # PAB27198) at 1 ug/mL in (lane 1) the absence and (lane 2) the presence of blocking peptide.

- Immunofluorescence

- Enzyme-linked Immunoabsorbent Assay

Gene Info — CASK

Entrez GeneID[8573](#)**Protein Accession#**[NP_003679](#)**Gene Name**

CASK

Gene Alias

CAGH39, CMG, FLJ22219, FLJ31914, LIN2, MICPCH, TNRC8

Gene Description

calcium/calmodulin-dependent serine protein kinase (MAGUK family)

Omim ID[300172](#)**Gene Ontology**[Hyperlink](#)**Gene Summary**

The CASK gene encodes a calcium/calmodulin-dependent serine protein kinase that is a member of the membrane-associated guanylate kinase (MAGUK) protein family. MAGUKs are scaffolding proteins associated with intercellular junctions (Atasoy et al., 2007 [PubMed 17287346]).[supplied by OMIM]

Other Designations

CAMGUK protein|calcium/calmodulin-dependent serine protein kinase membrane-associated guanylate kinase|trinucleotide repeat containing 8

Pathway

- [Tight junction](#)

Disease

- [Autistic Disorder](#)
- [Mental Retardation](#)
- [Psychotic Disorders](#)
- [Schizophrenia](#)