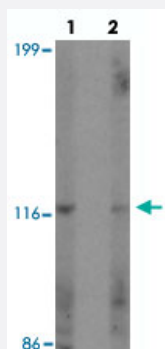


ZNF687 polyclonal antibody

Catalog # PAB27192 Size 100 ug

Applications



Western Blot (Cell lysate)

Western blot analysis of ZNF687 in Jurkat cell lysate with ZNF687 polyclonal antibody (Cat # PAB27192) at 0.5 ug/mL in (lane 1) the absence and (lane 2) the presence of blocking peptide.

Specification

Product Description	Rabbit polyclonal antibody raised against synthetic peptide of ZNF687.
Immunogen	A synthetic peptide corresponding to 17 amino acids at C-terminus of human ZNF687.
Host	Rabbit
Reactivity	Human
Specificity	ZNF687 antibody is human specific. At least three isoforms of ZNF687 are known to exist; this antibody will only detect the largest isoform.
Form	Liquid
Purification	Peptide affinity purification
Concentration	1 mg/mL
Isotype	IgG
Recommend Usage	Western Blot (0.5 ug/mL) The optimal working dilution should be determined by the end user.
Storage Buffer	In PBS (0.02% sodium azide)

Storage Instruction

Store at 4°C for three months. For long term storage store at -20°C.
Aliquot to avoid repeated freezing and thawing.

Note

This product contains sodium azide: a POISONOUS AND HAZARDOUS SUBSTANCE which should be handled by trained staff only.

Applications

- Western Blot (Cell lysate)

Western blot analysis of ZNF687 in Jurkat cell lysate with ZNF687 polyclonal antibody (Cat # PAB27192) at 0.5 ug/mL in (lane 1) the absence and (lane 2) the presence of blocking peptide.

- Immunofluorescence

- Enzyme-linked Immunoabsorbent Assay

Gene Info — ZNF687

Entrez GeneID[57592](#)**Protein Accession#**[NP_065883](#)**Gene Name**

ZNF687

Gene Alias

DKFZp78111719, KIAA1441, RP11-126K1.3

Gene Description

zinc finger protein 687

Omim ID[610568](#)**Gene Ontology**[Hyperlink](#)**Other Designations**

OTTHUMP00000014280