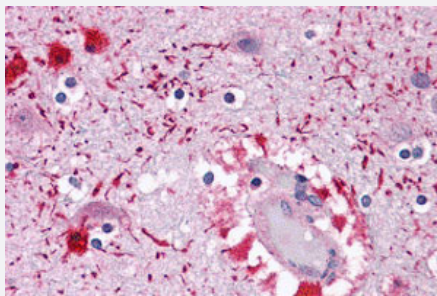


PIWIL2 polyclonal antibody

Catalog # PAB27177 Size 100 ug

Applications



Immunohistochemistry

Immunohistochemistry analysis of PIWIL2 in human brain tissue with PIWIL2 polyclonal antibody (Cat # PAB27177) at 5 ug/mL.

Specification

Product Description	Rabbit polyclonal antibody raised against synthetic peptide of PIWIL2.
Immunogen	A synthetic peptide corresponding to 14 amino acids at internal region of human PIWIL2.
Host	Rabbit
Reactivity	Human
Form	Liquid
Purification	Peptide affinity purification
Concentration	1 mg/mL
Isotype	IgG
Recommend Usage	Immunohistochemistry (5 ug/mL) The optimal working dilution should be determined by the end user.
Storage Buffer	In PBS (0.02% sodium azide)
Storage Instruction	Store at 4°C for three months. For long term storage store at -20°C. Aliquot to avoid repeated freezing and thawing.

Note

This product contains sodium azide: a POISONOUS AND HAZARDOUS SUBSTANCE which should be handled by trained staff only.

Applications

- Immunohistochemistry

Immunohistochemistry analysis of PIWIL2 in human brain tissue with PIWIL2 polyclonal antibody (Cat # PAB27177) at 5 ug/mL.

- Enzyme-linked Immunoabsorbent Assay

Gene Info — PIWIL2

Entrez GeneID [55124](#)

Protein Accession# [NP_00129193](#)

Gene Name PIWIL2

Gene Alias FLJ10351, HILI, MGC133049, PIWIL1L, mili

Gene Description piwi-like 2 (Drosophila)

Omim ID [610312](#)

Gene Ontology [Hyperlink](#)

Gene Summary PIWIL2 belongs to the Argonaute family of proteins, which function in development and maintenance of germline stem cells (Sasaki et al., 2003 [PubMed 12906857]).[supplied by OMIM]

Other Designations Hiwi-like|Miwilike|OTTHUMP00000123401|piwi-like 2

Pathway

- [Dorso-ventral axis formation](#)