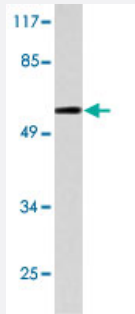


CSTF2 polyclonal antibody

Catalog # PAB27157 Size 100 uL

Applications



Western Blot (Cell lysate)

Western blot analysis of 293 cell lysate with CSTF2 polyclonal antibody (Cat # PAB27157).

Specification

Product Description	Rabbit polyclonal antibody raised against synthetic peptide of CSTF2.
Immunogen	A synthetic peptide corresponding to human CSTF2.
Host	Rabbit
Theoretical MW (kDa)	60
Reactivity	Human, Mouse
Specificity	CSTF2 polyclonal antibody detects endogenous levels of CSTF2 protein.
Form	Liquid
Purification	Antigen affinity purification
Concentration	1 mg/mL
Recommend Usage	Western Blot (1:500-1:1000) Immunohistochemistry (1:50-1:200) Immunofluorescence (1:50-1:200) The optimal working dilution should be determined by the end user.

Storage Buffer	In PBS, pH 7.2 (0.05% sodium azide)
Storage Instruction	Store at 4°C. For long term storage store at -20°C. Aliquot to avoid repeated freezing and thawing.
Note	This product contains sodium azide: a POISONOUS AND HAZARDOUS SUBSTANCE which should be handled by trained staff only.

Applications

- Western Blot (Cell lysate)

Western blot analysis of 293 cell lysate with CSTF2 polyclonal antibody (Cat # PAB27157).

- Immunohistochemistry

- Immunofluorescence

Gene Info — CSTF2

Entrez GeneID	1478
Protein Accession#	P33240
Gene Name	CSTF2
Gene Alias	CstF-64
Gene Description	cleavage stimulation factor, 3' pre-RNA, subunit 2, 64kDa
Omim ID	600368
Gene Ontology	Hyperlink
Gene Summary	This gene encodes a nuclear protein with an RRM (RNA recognition motif) domain. The protein is a member of the cleavage stimulation factor (CSTF) complex that is involved in the 3' end cleavage and polyadenylation of pre-mRNAs. Specifically, this protein binds GU-rich elements within the 3'-untranslated region of mRNAs. [provided by RefSeq]
Other Designations	CF-1 64 kDa subunit OTTHUMP00000024310 betaCstF-64 variant 2 cleavage stimulation factor subunit 2 cleavage stimulation factor, 64kDa subunit