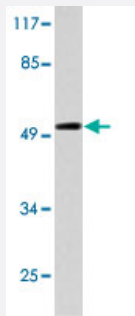


ATF7 polyclonal antibody

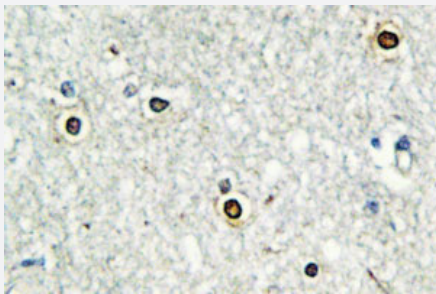
Catalog # PAB27155 Size 100 uL

Applications



Western Blot (Cell lysate)

Western blot analysis of HeLa cell lysate with ATF7 polyclonal antibody (Cat # PAB27155).



Immunohistochemistry (Formalin/PFA-fixed paraffin-embedded sections)

Immunohistochemical analysis of paraffin-embedded human brain tissue using ATF7 polyclonal antibody (Cat # PAB27155).

Specification

Product Description	Rabbit polyclonal antibody raised against synthetic peptide of ATF7.
Immunogen	A synthetic peptide corresponding to human ATF7.
Host	Rabbit
Theoretical MW (kDa)	52
Reactivity	Human, Mouse
Specificity	ATF7 polyclonal antibody detects endogenous levels of ATF7 protein.
Form	Liquid

Purification	Antigen affinity purification
Concentration	1 mg/mL
Recommend Usage	Western Blot (1:500-1:1000) Immunohistochemistry (1:50-1:200) Immunofluorescence (1:50-1:200) The optimal working dilution should be determined by the end user.
Storage Buffer	In PBS, pH 7.2 (0.05% sodium azide)
Storage Instruction	Store at 4°C. For long term storage store at -20°C. Aliquot to avoid repeated freezing and thawing.
Note	This product contains sodium azide: a POISONOUS AND HAZARDOUS SUBSTANCE which should be handled by trained staff only.

Applications

- Western Blot (Cell lysate)

Western blot analysis of HeLa cell lysate with ATF7 polyclonal antibody (Cat # PAB27155).

- Immunohistochemistry (Formalin/PFA-fixed paraffin-embedded sections)

Immunohistochemical analysis of paraffin-embedded human brain tissue using ATF7 polyclonal antibody (Cat # PAB27155).

- Immunofluorescence

Gene Info — ATF7

Entrez GeneID	11016
Protein Accession#	P17544
Gene Name	ATF7
Gene Alias	ATFA, MGC57182
Gene Description	activating transcription factor 7
Omim ID	606371
Gene Ontology	Hyperlink
Other Designations	-