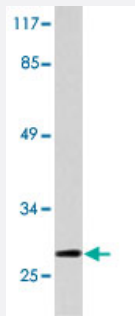


# HOXB9 polyclonal antibody

Catalog # PAB27154      Size 100 uL

## Applications



### Western Blot (Cell lysate)

Western blot analysis of K-562 cell lysate with HOXB9 polyclonal antibody (Cat # PAB27154).

## Specification

<b>Product Description</b>	Rabbit polyclonal antibody raised against synthetic peptide of HOXB9.
<b>Immunogen</b>	A synthetic peptide corresponding to human HOXB9.
<b>Host</b>	Rabbit
<b>Theoretical MW (kDa)</b>	28
<b>Reactivity</b>	Human, Mouse
<b>Specificity</b>	HOXB9 polyclonal antibody detects endogenous levels of HOXB9 protein.
<b>Form</b>	Liquid
<b>Purification</b>	Antigen affinity purification
<b>Concentration</b>	1 mg/mL
<b>Recommend Usage</b>	Western Blot (1:500-1:1000) Immunohistochemistry (1:50-1:200) The optimal working dilution should be determined by the end user.
<b>Storage Buffer</b>	In PBS, pH 7.2 (0.05% sodium azide)

**Storage Instruction**

Store at 4°C. For long term storage store at -20°C.  
Aliquot to avoid repeated freezing and thawing.

**Note**

This product contains sodium azide: a POISONOUS AND HAZARDOUS SUBSTANCE which should be handled by trained staff only.

## Applications

- Western Blot (Cell lysate)

Western blot analysis of K-562 cell lysate with HOXB9 polyclonal antibody (Cat # PAB27154).

- Immunohistochemistry

## Gene Info — HOXB9

**Entrez GeneID**[3219](#)**Protein Accession#**[P17482](#)**Gene Name**

HOXB9

**Gene Alias**

HOX-2.5, HOX2, HOX2E

**Gene Description**

homeobox B9

**Omim ID**[142964](#)**Gene Ontology**[Hyperlink](#)**Gene Summary**

This gene is a member of the Abd-B homeobox family and encodes a protein with a homeobox DNA-binding domain. It is included in a cluster of homeobox B genes located on chromosome 17. The encoded nuclear protein functions as a sequence-specific transcription factor that is involved in cell proliferation and differentiation. Increased expression of this gene is associated with some cases of leukemia, prostate cancer and lung cancer. [provided by RefSeq]

**Other Designations**

homeo box 2E|homeo box B9

## Disease

- [Genetic Predisposition to Disease](#)

- [Hip Dislocation](#)