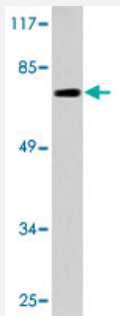


CDC16 polyclonal antibody

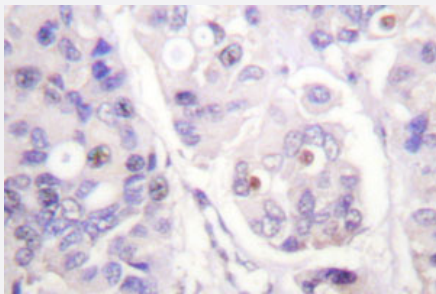
Catalog # PAB27122 Size 100 uL

Applications



Western Blot (Cell lysate)

Western blot analysis of HUVEC cell lysate with CDC16 polyclonal antibody (Cat # PAB27122).



Immunohistochemistry (Formalin/PFA-fixed paraffin-embedded sections)

Immunohistochemical analysis of paraffin-embedded human breast cancer tissue using CDC16 polyclonal antibody (Cat # PAB27122).

Specification

Product Description	Rabbit polyclonal antibody raised against synthetic peptide of CDC16.
Immunogen	A synthetic peptide corresponding to human CDC16.
Host	Rabbit
Theoretical MW (kDa)	72
Reactivity	Human, Mouse
Specificity	CDC16 polyclonal antibody detects endogenous levels of CDC16 protein.
Form	Liquid

Purification	Antigen affinity purification
Concentration	1 mg/mL
Recommend Usage	Western Blot (1:500-1:1000) Immunohistochemistry (1:50-1:200) Immunofluorescence (1:50-1:200) The optimal working dilution should be determined by the end user.
Storage Buffer	In PBS, pH 7.2 (0.05% sodium azide)
Storage Instruction	Store at 4°C. For long term storage store at -20°C. Aliquot to avoid repeated freezing and thawing.
Note	This product contains sodium azide: a POISONOUS AND HAZARDOUS SUBSTANCE which should be handled by trained staff only.

Applications

- Western Blot (Cell lysate)

Western blot analysis of HUVEC cell lysate with CDC16 polyclonal antibody (Cat # PAB27122).

- Immunohistochemistry (Formalin/PFA-fixed paraffin-embedded sections)

Immunohistochemical analysis of paraffin-embedded human breast cancer tissue using CDC16 polyclonal antibody (Cat # PAB27122).

- Immunofluorescence

Gene Info — CDC16

Entrez GeneID	8881
Protein Accession#	Q13042
Gene Name	CDC16
Gene Alias	APC6
Gene Description	cell division cycle 16 homolog (S. cerevisiae)
Omim ID	603461
Gene Ontology	Hyperlink

Gene Summary

This gene encodes a component protein of the APC complex, which is composed of eight proteins and functions as a protein ubiquitin ligase. The APC complex is a cyclin degradation system that governs exit from mitosis. Each component protein of the APC complex is highly conserved among eukaryotic organisms. This protein and two other APC complex proteins, CDC23 and CDC27, contain a tetratricopeptide repeat (TPR), a protein domain that may be involved in protein-protein interaction. Multiple alternatively spliced variants, encoding the same protein, have been identified. [provided by RefSeq]

Other Designations

anaphase-promoting complex, subunit 6

Pathway

- [Cell cycle](#)
- [Ubiquitin mediated proteolysis](#)

Disease

- [Adenocarcinoma](#)
- [Genetic Predisposition to Disease](#)
- [Pancreatic Neoplasms](#)