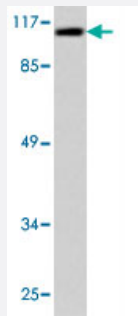


SENP7 polyclonal antibody

Catalog # PAB27100 Size 100 uL

Applications



Western Blot (Cell lysate)

Western blot analysis of HUVEC cell lysate with SENP7 polyclonal antibody (Cat # PAB27100).

Specification

Product Description	Rabbit polyclonal antibody raised against synthetic peptide of SENP7.
Immunogen	A synthetic peptide corresponding to human SENP7.
Host	Rabbit
Theoretical MW (kDa)	112
Reactivity	Human, Mouse
Specificity	SENP7 polyclonal antibody detects endogenous levels of SENP7 protein.
Form	Liquid
Purification	Antigen affinity purification
Concentration	1 mg/mL
Recommend Usage	Western Blot (1:500-1:1000) Immunohistochemistry (1:50-1:200) The optimal working dilution should be determined by the end user.
Storage Buffer	In PBS, pH 7.2 (0.05% sodium azide)

Storage Instruction

Store at 4°C. For long term storage store at -20°C.
Aliquot to avoid repeated freezing and thawing.

Note

This product contains sodium azide: a POISONOUS AND HAZARDOUS SUBSTANCE which should be handled by trained staff only.

Applications

- Western Blot (Cell lysate)

Western blot analysis of HUVEC cell lysate with SENP7 polyclonal antibody (Cat # PAB27100).

- Immunohistochemistry

Gene Info — SENP7

Entrez GeneID [57337](#)

Protein Accession# [Q9BQF6](#)

Gene Name SENP7

Gene Alias KIAA1707, MGC157730

Gene Description SUMO1/sentrin specific peptidase 7

Gene Ontology [Hyperlink](#)

Gene Summary The reversible posttranslational modification of proteins by the addition of small ubiquitin-like SUMO proteins (see SUMO1; MIM 601912) is required for many cellular processes. SUMO-specific proteases, such as SENP7, process SUMO precursors to generate a C-terminal diglycine motif required for the conjugation reaction. They also display isopeptidase activity for deconjugation of SUMO-conjugated substrates (Lima and Reverter, 2008 [PubMed 18799455]).[supplied by OMIM]

Other Designations SUMO1/sentrin specific protease 7|sentrin/SUMO-specific protease|sentrin/SUMO-specific protease 7