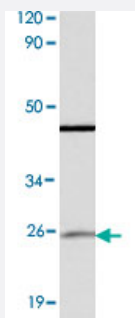


RIT1 polyclonal antibody

Catalog # PAB27087 Size 100 uL

Applications



Western Blot (Cell lysate)

Western blot analysis of A-549 cell lysate with RIT1 polyclonal antibody (Cat # PAB27087) at 1:500 dilution.

Specification

Product Description Rabbit polyclonal antibody raised against synthetic peptide of RIT1.

Immunogen A synthetic peptide corresponding to human RIT1.

Host Rabbit

Theoretical MW (kDa) ~25.0

Reactivity Human, Mouse

Specificity RIT1 polyclonal antibody detects endogenous levels of RIT1 protein.

Form Liquid

Purification Antigen affinity purification

Recommend Usage Western Blot (1:500-1:1000)
The optimal working dilution should be determined by the end user.

Storage Buffer In PBS, pH 7.2 (0.09% sodium azide)

Storage Instruction Store at 4°C. For long term storage store at -20°C.
Aliquot to avoid repeated freezing and thawing.

Note

This product contains sodium azide: a POISONOUS AND HAZARDOUS SUBSTANCE which should be handled by trained staff only.

Applications

- Western Blot (Cell lysate)

Western blot analysis of A-549 cell lysate with RIT1 polyclonal antibody (Cat # PAB27087) at 1:500 dilution.

Gene Info — RIT1

Entrez GeneID	6016
Protein Accession#	Q92963
Gene Name	RIT1
Gene Alias	MGC125864, MGC125865, RIBB, RIT, ROC1
Gene Description	Ras-like without CAAX 1
Omim ID	609591
Gene Ontology	Hyperlink
Gene Summary	RIT belongs to the RAS (HRAS; MIM 190020) subfamily of small GTPases (Hynds et al., 2003 [PubMed 12668729]).[supplied by OMIM]
Other Designations	GTP-binding protein Roc1 OTTHUMP00000015932 Ric-like, expressed in many tissues