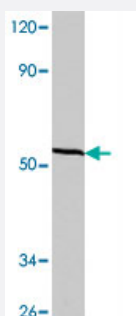


# RCBTB1 polyclonal antibody

Catalog # PAB27085

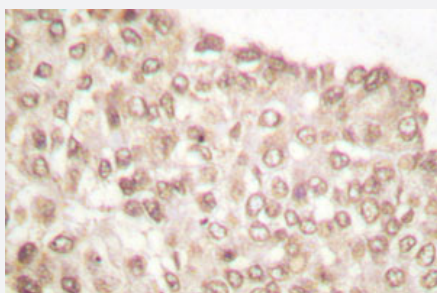
Size 100 uL

## Applications



### Western Blot (Cell lysate)

Western blot analysis of Raw 264.7 cell lysate with RCBTB1 polyclonal antibody (Cat # PAB27085) at 1:500 dilution.



### Immunohistochemistry (Formalin/PFA-fixed paraffin-embedded sections)

Immunohistochemical analysis of paraffin-embedded human breast cancer tissue using RCBTB1 polyclonal antibody (Cat # PAB27085).

## Specification

Product Description	Rabbit polyclonal antibody raised against synthetic peptide of RCBTB1.
Immunogen	A synthetic peptide corresponding to human RCBTB1.
Host	Rabbit
Theoretical MW (kDa)	~58.0
Reactivity	Human, Mouse
Specificity	RCBTB1 polyclonal antibody detects endogenous levels of RCBTB1 protein.
Form	Liquid

Purification	Antigen affinity purification
Recommend Usage	Western Blot (1:500-1:1000) Immunohistochemistry (1:50-1:200) The optimal working dilution should be determined by the end user.
Storage Buffer	In PBS, pH 7.2 (0.09% sodium azide)
Storage Instruction	Store at 4°C. For long term storage store at -20°C. Aliquot to avoid repeated freezing and thawing.
Note	This product contains sodium azide: a POISONOUS AND HAZARDOUS SUBSTANCE which should be handled by trained staff only.

## Applications

- Western Blot (Cell lysate)

Western blot analysis of Raw 264.7 cell lysate with RCBTB1 polyclonal antibody (Cat # PAB27085) at 1:500 dilution.

- Immunohistochemistry (Formalin/PFA-fixed paraffin-embedded sections)

Immunohistochemical analysis of paraffin-embedded human breast cancer tissue using RCBTB1 polyclonal antibody (Cat # PAB27085).

## Gene Info — RCBTB1

Entrez GeneID	<a href="#">55213</a>
Protein Accession#	<a href="#">Q8NDN9</a>
Gene Name	RCBTB1
Gene Alias	CLLD7, CLLL7, GLP, MGC33184, RP11-185C18.1
Gene Description	regulator of chromosome condensation (RCC1) and BTB (POZ) domain containing protein 1
Omim ID	<a href="#">607867</a>
Gene Ontology	<a href="#">Hyperlink</a>
Gene Summary	This gene encodes a protein with an N-terminal RCC1 domain and a C-terminal BTB (broad complex, tramtrack and bric-a-brac) domain. In rat, over-expression of this gene in vascular smooth muscle cells induced cellular hypertrophy. In rat, the C-terminus of RCBTB1 interacts with the angiotensin II receptor-1A. In humans, this gene maps to a region of chromosome 13q that is frequently deleted in B-cell chronic lymphocytic leukemia and other lymphoid malignancies. [provided by RefSeq]

**Other Designations**

GDP/GTP exchange factor (GEF)-like protein|OTTHUMP00000018413|chronic lymphocytic leukemia deletion region gene 7

**Disease**

- [Asthma](#)
- [Eczema](#)
- [Hypersensitivity](#)
- [Respiratory Sounds](#)
- [Rhinitis](#)