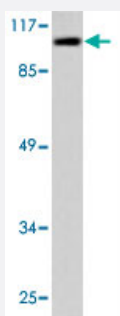


HSPH1 polyclonal antibody

Catalog # PAB27072

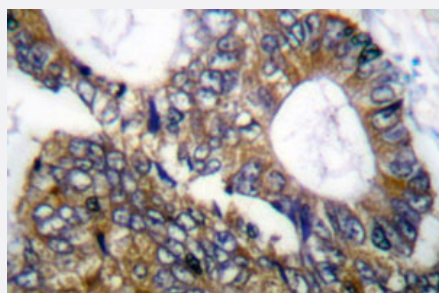
Size 100 uL

Applications



Western Blot (Cell lysate)

Western blot analysis of HeLa cell lysate with HSPH1 polyclonal antibody (Cat # PAB27072).



Immunohistochemistry (Formalin/PFA-fixed paraffin-embedded sections)

Immunohistochemical analysis of paraffin-embedded human colon cancer tissue using HSPH1 polyclonal antibody (Cat # PAB27072).

Specification

Product Description	Rabbit polyclonal antibody raised against synthetic peptide of HSPH1.
Immunogen	A synthetic peptide corresponding to human HSPH1.
Host	Rabbit
Theoretical MW (kDa)	100
Reactivity	Human, Mouse
Specificity	HSPH1 polyclonal antibody detects endogenous levels of HSPH1 protein.
Form	Liquid

Purification	Antigen affinity purification
Concentration	1 mg/mL
Recommend Usage	Western Blot (1:500-1:1000) Immunohistochemistry (1:50-1:200) Immunofluorescence (1:50-1:200) The optimal working dilution should be determined by the end user.
Storage Buffer	In PBS, pH 7.2 (0.05% sodium azide)
Storage Instruction	Store at 4°C. For long term storage store at -20°C. Aliquot to avoid repeated freezing and thawing.
Note	This product contains sodium azide: a POISONOUS AND HAZARDOUS SUBSTANCE which should be handled by trained staff only.

Applications

- Western Blot (Cell lysate)

Western blot analysis of HeLa cell lysate with HSPH1 polyclonal antibody (Cat # PAB27072).

- Immunohistochemistry (Formalin/PFA-fixed paraffin-embedded sections)

Immunohistochemical analysis of paraffin-embedded human colon cancer tissue using HSPH1 polyclonal antibody (Cat # PAB27072).

- Immunofluorescence

Gene Info — HSPH1

Entrez GeneID	10808
Protein Accession#	Q92598
Gene Name	HSPH1
Gene Alias	DKFZp686M05240, HSP105, HSP105A, HSP105B, KIAA0201, NY-CO-25
Gene Description	heat shock 105kDa/110kDa protein 1
Omim ID	610703
Gene Ontology	Hyperlink

Other Designations

OTTHUMP00000018208|heat shock 105kD|heat shock 105kD alpha|heat shock 105kD beta|heat shock 105kDa protein 1
