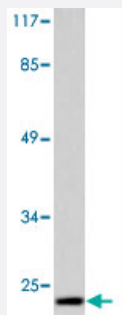


PARK7 polyclonal antibody

Catalog # PAB27051

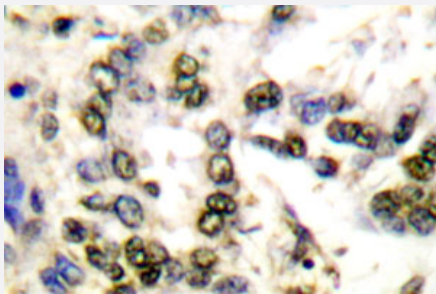
Size 100 uL

Applications



Western Blot (Cell lysate)

Western blot analysis of PARK7 polyclonal antibody (Cat # PAB27051) in extracts from HUVEC cells.



Immunohistochemistry (Formalin/PFA-fixed paraffin-embedded sections)

Immunohistochemical analysis of PARK7 polyclonal antibody (Cat # PAB27051) in paraffin-embedded human lung carcinoma tissue.

Specification

Product Description	Rabbit polyclonal antibody raised against synthetic peptide of PARK7.
Immunogen	A synthetic peptide corresponding to human PARK7.
Host	Rabbit
Theoretical MW (kDa)	22
Reactivity	Human, Mouse
Specificity	PARK7 polyclonal antibody detects endogenous levels of PARK7 protein.
Form	Liquid

Purification	Antigen affinity purification
Concentration	1 mg/mL
Recommend Usage	Western Blot (1:500-1:1000) Immunohistochemistry (1:50-1:200) Immunofluorescence (1:50-1:200) The optimal working dilution should be determined by the end user.
Storage Buffer	In PBS, pH 7.2 (0.05% sodium azide)
Storage Instruction	Store at 4°C. For long term storage store at -20°C. Aliquot to avoid repeated freezing and thawing.
Note	This product contains sodium azide: a POISONOUS AND HAZARDOUS SUBSTANCE which should be handled by trained staff only.

Applications

- Western Blot (Cell lysate)

Western blot analysis of PARK7 polyclonal antibody (Cat # PAB27051) in extracts from HUVEC cells.

- Immunohistochemistry (Formalin/PFA-fixed paraffin-embedded sections)

Immunohistochemical analysis of PARK7 polyclonal antibody (Cat # PAB27051) in paraffin-embedded human lung carcinoma tissue.

- Immunofluorescence

- Enzyme-linked Immunoabsorbent Assay

Gene Info — PARK7

Entrez GeneID	11315
Protein Accession#	Q99497
Gene Name	PARK7
Gene Alias	DJ-1, DJ1, FLJ27376, FLJ34360, FLJ92274
Gene Description	Parkinson disease (autosomal recessive, early onset) 7
Omim ID	602533 606324

Gene Ontology

[Hyperlink](#)

Gene Summary

The product of this gene belongs to the peptidase C56 family of proteins. It acts as a positive regulator of androgen receptor-dependent transcription. It may also function as a redox-sensitive chaperone, as a sensor for oxidative stress, and it apparently protects neurons against oxidative stress and cell death. Defects in this gene are the cause of autosomal recessive early-onset Parkinson disease 7. Two transcript variants encoding the same protein have been identified for this gene. [provided by RefSeq]

Other Designations

OTTHUMP00000001348|OTTHUMP00000001349|OTTHUMP00000001350|OTTHUMP00000001351|Parkinson disease protein 7|oncogene DJ1|protein DJ-1

Disease

- [Alzheimer disease](#)
- [Chromosome Disorders](#)
- [Dementia](#)
- [Disease Progression](#)
- [Genetic Predisposition to Disease](#)
- [Lewy Body Disease](#)
- [Parkinson disease](#)
- [Parkinsonian Disorders](#)