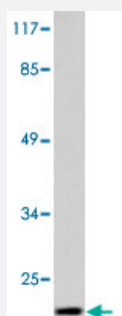


CYCS polyclonal antibody

Catalog # PAB27050

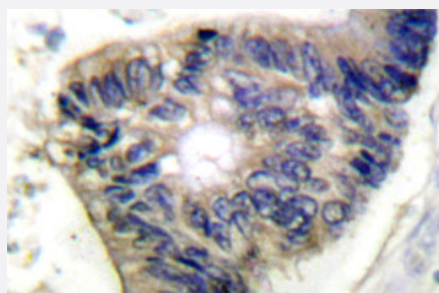
Size 100 uL

Applications



Western Blot (Cell lysate)

Western blot analysis of CYCS polyclonal antibody (Cat # PAB27050) in extracts from COS-7 cells.



Immunohistochemistry (Formalin/PFA-fixed paraffin-embedded sections)

Immunohistochemical analysis of CYCS polyclonal antibody (Cat # PAB27050) in paraffin-embedded human colon carcinoma tissue.

Specification

| | |
|-----------------------------|--|
| Product Description | Rabbit polyclonal antibody raised against synthetic peptide of CYCS. |
| Immunogen | A synthetic peptide corresponding to human CYCS. |
| Host | Rabbit |
| Theoretical MW (kDa) | 15 |
| Reactivity | Human, Mouse, Rat |
| Specificity | CYCS polyclonal antibody detects endogenous levels of CYCS protein. |
| Form | Liquid |

| | |
|---------------------|--|
| Purification | Antigen affinity purification |
| Concentration | 1 mg/mL |
| Recommend Usage | Western Blot (1:500-1:1000) Immunohistochemistry (1:50-1:200) The optimal working dilution should be determined by the end user. |
| Storage Buffer | In PBS, pH 7.2 (0.05% sodium azide) |
| Storage Instruction | Store at 4°C. For long term storage store at -20°C. Aliquot to avoid repeated freezing and thawing. |
| Note | This product contains sodium azide: a POISONOUS AND HAZARDOUS SUBSTANCE which should be handled by trained staff only. |

Applications

- Western Blot (Cell lysate)

Western blot analysis of CYCS polyclonal antibody (Cat # PAB27050) in extracts from COS-7 cells.

- Immunohistochemistry (Formalin/PFA-fixed paraffin-embedded sections)

Immunohistochemical analysis of CYCS polyclonal antibody (Cat # PAB27050) in paraffin-embedded human colon carcinoma tissue.

Gene Info — CYCS

| | |
|--------------------|---------------------------|
| Entrez GeneID | 54205 |
| Protein Accession# | P99999 |
| Gene Name | CYCS |
| Gene Alias | CYC, HCS |
| Gene Description | cytochrome c, somatic |
| Omim ID | 123970 |
| Gene Ontology | Hyperlink |

Gene Summary

This gene encodes cytochrome c, a component of the electron transport chain in mitochondria. The heme group of cytochrome c accepts electrons from the b-c1 complex and transfers electrons to the cytochrome oxidase complex. Cytochrome c is also involved in initiation of apoptosis. Upon release of cytochrome c to the cytoplasm, the protein binds apoptotic protease activating factor which activates the apoptotic initiator procaspase 9. Many cytochrome c pseudogenes exist, scattered throughout the human genome. [provided by RefSeq]

Other Designations

cytochrome c

Pathway

- [Amyotrophic lateral sclerosis \(ALS\)](#)
- [Apoptosis](#)
- [Colorectal cancer](#)
- [p53 signaling pathway](#)
- [Pathways in cancer](#)
- [Small cell lung cancer](#)

Disease

- [Thrombocytopenia](#)