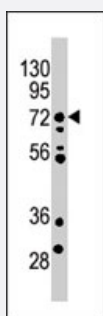


# MELK polyclonal antibody

Catalog # PAB2705

Size 400 uL

## Applications



### Western Blot (Tissue lysate)

The MELK polyclonal antibody (Cat # PAB2705) is used in Western blot to detect MELK in mouse brain tissue lysate.

## Specification

<b>Product Description</b>	Rabbit polyclonal antibody raised against synthetic peptide of MELK.
<b>Immunogen</b>	A synthetic peptide (conjugated with KLH) corresponding to internal region of human MELK.
<b>Host</b>	Rabbit
<b>Reactivity</b>	Human
<b>Form</b>	Liquid
<b>Purification</b>	Protein G purification
<b>Recommend Usage</b>	Western Blot (1:1000) The optimal working dilution should be determined by the end user.
<b>Storage Buffer</b>	In PBS (0.09% sodium azide)
<b>Storage Instruction</b>	Store at 4°C. For long term storage store at -20°C. Aliquot to avoid repeated freezing and thawing.
<b>Note</b>	This product contains sodium azide: a POISONOUS AND HAZARDOUS SUBSTANCE which should be handled by trained staff only.

## Applications

- Western Blot (Tissue lysate)

The MELK polyclonal antibody (Cat # PAB2705) is used in Western blot to detect MRLK in mouse brain tissue lysate.

## Gene Info — MELK

Entrez GeneID	<a href="#">9833</a>
Protein Accession#	<a href="#">NP_055606:Q14680</a>
Gene Name	MELK
Gene Alias	HPK38, KIAA0175
Gene Description	maternal embryonic leucine zipper kinase
Omim ID	<a href="#">607025</a>
Gene Ontology	<a href="#">Hyperlink</a>
Other Designations	OTTHUMP00000046113 pEg3 kinase

## Publication Reference

- [New member of the Snf1/AMPK kinase family, Melk, is expressed in the mouse egg and preimplantation embryo.](#)

Heyer BS, Warsowe J, Solter D, Knowles BB, Ackerman SL.

Molecular Reproduction and Development 1997 Jun; 47(2):148.