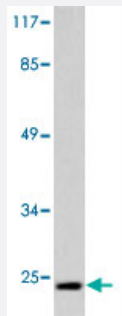


CLDN4 polyclonal antibody

Catalog # PAB27036

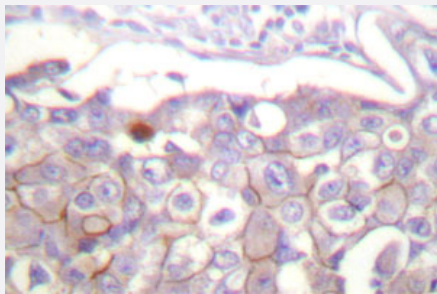
Size 100 uL

Applications



Western Blot (Cell lysate)

Western blot analysis of CLDN4 polyclonal antibody (Cat # PAB27036) in extracts from HeLa cells.



Immunohistochemistry (Formalin/PFA-fixed paraffin-embedded sections)

Immunohistochemical analysis of CLDN4 polyclonal antibody (Cat # PAB27036) in paraffin-embedded human breast carcinoma tissue.

Specification

| | |
|-----------------------------|---|
| Product Description | Rabbit polyclonal antibody raised against synthetic peptide of CLDN4. |
| Immunogen | A synthetic peptide corresponding to human CLDN4. |
| Host | Rabbit |
| Theoretical MW (kDa) | 22 |
| Reactivity | Human, Mouse, Rat |
| Specificity | CLDN4 polyclonal antibody detects endogenous levels of CLDN4 protein. |
| Form | Liquid |

| | |
|---------------------|---|
| Purification | Antigen affinity purification |
| Concentration | 1 mg/mL |
| Recommend Usage | Western Blot (1:500-1:1000) Immunohistochemistry (1:50-1:200) Immunofluorescence (1:50-1:200) The optimal working dilution should be determined by the end user. |
| Storage Buffer | In PBS, pH 7.2 (0.05% sodium azide) |
| Storage Instruction | Store at 4°C. For long term storage store at -20°C. Aliquot to avoid repeated freezing and thawing. |
| Note | This product contains sodium azide: a POISONOUS AND HAZARDOUS SUBSTANCE which should be handled by trained staff only. |

Applications

- Western Blot (Cell lysate)

Western blot analysis of CLDN4 polyclonal antibody (Cat # PAB27036) in extracts from HeLa cells.

- Immunohistochemistry (Formalin/PFA-fixed paraffin-embedded sections)

Immunohistochemical analysis of CLDN4 polyclonal antibody (Cat # PAB27036) in paraffin-embedded human breast carcinoma tissue.

- Enzyme-linked Immunoabsorbent Assay

Gene Info — CLDN4

| | |
|--------------------|--|
| Entrez GeneID | 1364 |
| Protein Accession# | O14493 |
| Gene Name | CLDN4 |
| Gene Alias | CPE-R, CPER, CPETR, CPETR1, WBSCR8, hCPE-R |
| Gene Description | claudin 4 |
| Omim ID | 602909 |
| Gene Ontology | Hyperlink |

Gene Summary

This gene encodes an integral membrane protein, which belongs to the claudin family. The protein is a component of tight junction strands and may play a role in internal organ development and function during pre- and postnatal life. This gene is deleted in Williams-Beuren syndrome, a neurodevelopmental disorder affecting multiple systems. [provided by RefSeq]

Other Designations

Clostridium perfringens enterotoxin receptor 1|Williams-Beuren syndrome chromosomal region 8 protein

Pathway

- [Cell adhesion molecules \(CAMs\)](#)
- [Leukocyte transendothelial migration](#)
- [Tight junction](#)