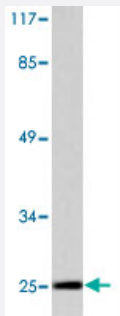


# CLDN3 polyclonal antibody

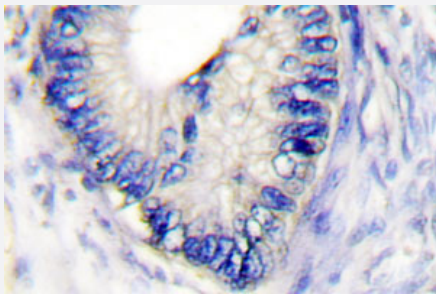
Catalog # PAB27035      Size 100 uL

## Applications



### Western Blot (Cell lysate)

Western blot analysis of CLDN3 polyclonal antibody (Cat # PAB27035) in extracts from HUVEC.



### Immunohistochemistry (Formalin/PFA-fixed paraffin-embedded sections)

Immunohistochemical analysis of CLDN3 polyclonal antibody (Cat # PAB27035) in paraffin-embedded human colon carcinoma tissue.

## Specification

<b>Product Description</b>	Rabbit polyclonal antibody raised against synthetic peptide of CLDN3.
<b>Immunogen</b>	A synthetic peptide corresponding to human CLDN3.
<b>Host</b>	Rabbit
<b>Theoretical MW (kDa)</b>	25
<b>Reactivity</b>	Human, Mouse, Rat
<b>Specificity</b>	CLDN3 polyclonal antibody detects endogenous levels of CLDN3 protein.
<b>Form</b>	Liquid

<b>Purification</b>	Antigen affinity purification
<b>Concentration</b>	1 mg/mL
<b>Recommend Usage</b>	Western Blot (1:500-1:1000) Immunohistochemistry (1:50-1:200) Immunofluorescence (1:50-1:200) The optimal working dilution should be determined by the end user.
<b>Storage Buffer</b>	In PBS, pH 7.2 (0.05% sodium azide)
<b>Storage Instruction</b>	Store at 4°C. For long term storage store at -20°C. Aliquot to avoid repeated freezing and thawing.
<b>Note</b>	This product contains sodium azide: a POISONOUS AND HAZARDOUS SUBSTANCE which should be handled by trained staff only.

## Applications

- Western Blot (Cell lysate)

Western blot analysis of CLDN3 polyclonal antibody (Cat # PAB27035) in extracts from HUVEC.

- Immunohistochemistry (Formalin/PFA-fixed paraffin-embedded sections)

Immunohistochemical analysis of CLDN3 polyclonal antibody (Cat # PAB27035) in paraffin-embedded human colon carcinoma tissue.

- Immunofluorescence

- Enzyme-linked Immunoabsorbent Assay

## Gene Info — CLDN3

<b>Entrez GeneID</b>	<a href="#">1365</a>
<b>Protein Accession#</b>	<a href="#">O15551</a>
<b>Gene Name</b>	CLDN3
<b>Gene Alias</b>	C7orf1, CPE-R2, CPETR2, HRVP1, RVP1
<b>Gene Description</b>	claudin 3
<b>Omim ID</b>	<a href="#">602910</a>

## Gene Ontology

[Hyperlink](#)

## Gene Summary

Tight junctions represent one mode of cell-to-cell adhesion in epithelial or endothelial cell sheets, forming continuous seals around cells and serving as a physical barrier to prevent solutes and water from passing freely through the paracellular space. These junctions are comprised of sets of continuous networking strands in the outwardly facing cytoplasmic leaflet, with complementary grooves in the inwardly facing extracytoplasmic leaflet. The protein encoded by this intronless gene, a member of the claudin family, is an integral membrane protein and a component of tight junction strands. It is also a low-affinity receptor for Clostridium perfringens enterotoxin, and shares aa sequence similarity with a putative apoptosis-related protein found in rat. [provided by RefSeq]

## Other Designations

CPE-receptor 2|Clostridium perfringens enterotoxin receptor 2|OTTHUMP00000025042|OTTHUMP00000160506|claudin-3|ventral prostate.1-like protein

## Pathway

- [Cell adhesion molecules \(CAMs\)](#)
- [Leukocyte transendothelial migration](#)
- [Tight junction](#)