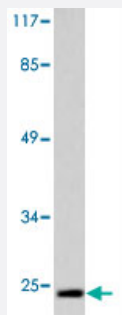


CLDN2 polyclonal antibody

Catalog # PAB27034

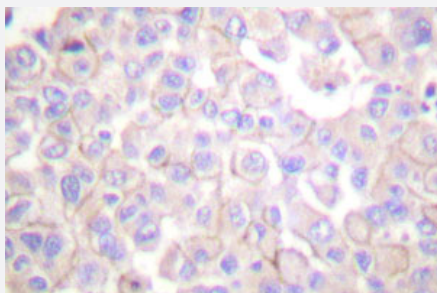
Size 100 uL

Applications



Western Blot (Cell lysate)

Western blot analysis of CLDN2 polyclonal antibody (Cat # PAB27034) in extracts from NIH/3T3 cells.



Immunohistochemistry (Formalin/PFA-fixed paraffin-embedded sections)

Immunohistochemical analysis of CLDN2 polyclonal antibody (Cat # PAB27034) in paraffin-embedded human breast carcinoma tissue.

Specification

Product Description	Rabbit polyclonal antibody raised against synthetic peptide of CLDN2.
Immunogen	A synthetic peptide corresponding to human CLDN2.
Host	Rabbit
Theoretical MW (kDa)	25
Reactivity	Human, Mouse
Specificity	CLDN2 polyclonal antibody detects endogenous levels of CLDN2 protein.
Form	Liquid

Purification	Antigen affinity purification
Concentration	1 mg/mL
Recommend Usage	Western Blot (1:500-1:1000) Immunohistochemistry (1:50-1:200) The optimal working dilution should be determined by the end user.
Storage Buffer	In PBS, pH 7.2 (0.05% sodium azide)
Storage Instruction	Store at 4°C. For long term storage store at -20°C. Aliquot to avoid repeated freezing and thawing.
Note	This product contains sodium azide: a POISONOUS AND HAZARDOUS SUBSTANCE which should be handled by trained staff only.

Applications

- Western Blot (Cell lysate)

Western blot analysis of CLDN2 polyclonal antibody (Cat # PAB27034) in extracts from NIH/3T3 cells.

- Immunohistochemistry (Formalin/PFA-fixed paraffin-embedded sections)

Immunohistochemical analysis of CLDN2 polyclonal antibody (Cat # PAB27034) in paraffin-embedded human breast carcinoma tissue.

- Enzyme-linked Immunoabsorbent Assay

Gene Info — CLDN2

Entrez GeneID	9075
Protein Accession#	P57739
Gene Name	CLDN2
Gene Alias	-
Gene Description	claudin 2
Omim ID	300520
Gene Ontology	Hyperlink

Gene Summary

Members of the claudin protein family, such as CLDN2, are expressed in an organ-specific manner and regulate the tissue-specific physiologic properties of tight junctions (Sakaguchi et al., 2002 [PubMed 11934881]).[supplied by OMIM]

Other Designations

OTTHUMP00000023793

Pathway

- [Cell adhesion molecules \(CAMs\)](#)
- [Leukocyte transendothelial migration](#)
- [Tight junction](#)