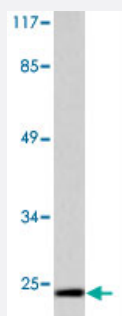


CLDN11 polyclonal antibody

Catalog # PAB27033

Size 100 uL

Applications



Western Blot (Cell lysate)

Western blot analysis of CLDN11 polyclonal antibody (Cat # PAB27033) in extracts from mouse brain.

Specification

Product Description	Rabbit polyclonal antibody raised against synthetic peptide of CLDN11.
Immunogen	A synthetic peptide corresponding to human CLDN11.
Host	Rabbit
Theoretical MW (kDa)	20
Reactivity	Human, Mouse, Rat
Specificity	CLDN11 polyclonal antibody detects endogenous levels of CLDN11 protein.
Form	Liquid
Purification	Antigen affinity purification
Concentration	1 mg/mL
Recommend Usage	Western Blot (1:500-1:1000) The optimal working dilution should be determined by the end user.
Storage Buffer	In PBS, pH 7.2 (0.05% sodium azide)

Storage Instruction

Store at 4°C. For long term storage store at -20°C.
Aliquot to avoid repeated freezing and thawing.

Note

This product contains sodium azide: a POISONOUS AND HAZARDOUS SUBSTANCE which should be handled by trained staff only.

Applications

- Western Blot (Cell lysate)

Western blot analysis of CLDN11 polyclonal antibody (Cat # PAB27033) in extracts from mouse brain.

- Enzyme-linked Immunoabsorbent Assay

Gene Info — CLDN11

Entrez GeneID
[5010](#)
Protein Accession#
[O75508](#)
Gene Name

CLDN11

Gene Alias

OSP, OTM

Gene Description

claudin 11

Omim ID
[601326](#)
Gene Ontology
[Hyperlink](#)
Gene Summary

The protein encoded by this gene belongs to the claudin family of tight junction associated proteins and is a major component of central nervous system myelin that is necessary for normal CNS function. There is growing evidence that the protein determines the permeability between layers of myelin sheaths via focal adhesion and, with its expression highly regulated during development, may play an important role in cellular proliferation and migration. In addition, the protein is a candidate autoantigen in the development of autoimmune demyelinating disease. [provided by RefSeq]

Other Designations

oligodendrocyte transmembrane protein

Pathway

- [Cell adhesion molecules \(CAMs\)](#)

- [Leukocyte transendothelial migration](#)

- [Tight junction](#)