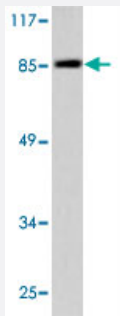


# JUP polyclonal antibody

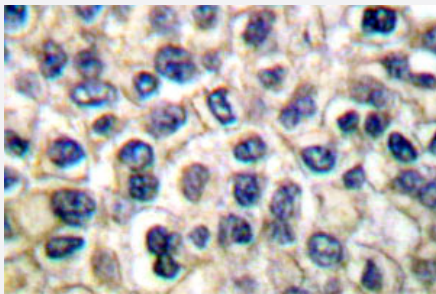
Catalog # PAB27027      Size 100 uL

## Applications



### Western Blot (Cell lysate)

Western blot analysis of JUP polyclonal antibody (Cat # PAB27027) in extracts from HeLa cells.



### Immunohistochemistry (Formalin/PFA-fixed paraffin-embedded sections)

Immunohistochemical analysis of JUP polyclonal antibody (Cat # PAB27027) in paraffin-embedded human breast carcinoma tissue.

## Specification

<b>Product Description</b>	Rabbit polyclonal antibody raised against synthetic peptide of JUP.
<b>Immunogen</b>	A synthetic peptide corresponding to human JUP.
<b>Host</b>	Rabbit
<b>Theoretical MW (kDa)</b>	82
<b>Reactivity</b>	Human, Mouse, Rat
<b>Specificity</b>	JUP polyclonal antibody detects endogenous levels of JUP protein.
<b>Form</b>	Liquid

Purification	Antigen affinity purification
Concentration	1 mg/mL
Recommend Usage	Western Blot (1:500-1:1000) Immunohistochemistry (1:50-1:200) Immunofluorescence (1:50-1:200) The optimal working dilution should be determined by the end user.
Storage Buffer	In PBS, pH 7.2 (0.05% sodium azide)
Storage Instruction	Store at 4°C. For long term storage store at -20°C. Aliquot to avoid repeated freezing and thawing.
Note	This product contains sodium azide: a POISONOUS AND HAZARDOUS SUBSTANCE which should be handled by trained staff only.

## Applications

- Western Blot (Cell lysate)

Western blot analysis of JUP polyclonal antibody (Cat # PAB27027) in extracts from HeLa cells.

- Immunohistochemistry (Formalin/PFA-fixed paraffin-embedded sections)

Immunohistochemical analysis of JUP polyclonal antibody (Cat # PAB27027) in paraffin-embedded human breast carcinoma tissue.

- Enzyme-linked Immunoabsorbent Assay

## Gene Info — JUP

Entrez GeneID	<a href="#">3728</a>
Protein Accession#	<a href="#">P14923</a>
Gene Name	JUP
Gene Alias	ARVD12, CTNNG, DP3, DP11, PDGB, PKGB
Gene Description	junction plakoglobin
Omim ID	<a href="#">173325 601214</a>
Gene Ontology	<a href="#">Hyperlink</a>

**Gene Summary**

This gene encodes a major cytoplasmic protein which is the only known constituent common to submembranous plaques of both desmosomes and intermediate junctions. This protein forms distinct complexes with cadherins and desmosomal cadherins and is a member of the catenin family since it contains a distinct repeating amino acid motif called the armadillo repeat. Mutation in this gene has been associated with Naxos disease. Alternative splicing occurs in this gene; however, not all transcripts have been fully described. [provided by RefSeq]

**Other Designations**

OTTHUMP00000164735|catenin (cadherin-associated protein), gamma (80kD)|catenin (cadherin-associated protein), gamma 80kDa|gamma-catenin

**Pathway**

- [Acute myeloid leukemia](#)
- [Arrhythmogenic right ventricular cardiomyopathy \(ARVC\)](#)
- [Pathways in cancer](#)

**Disease**

- [Arrhythmias](#)
- [Arrhythmogenic Right Ventricular Dysplasia](#)
- [Genetic Predisposition to Disease](#)