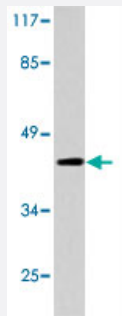


ACTG2 polyclonal antibody

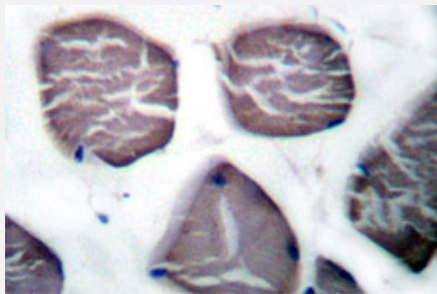
Catalog # PAB27015 Size 100 uL

Applications



Western Blot (Cell lysate)

Western blot analysis of ACTG2 polyclonal antibody (Cat # PAB27015) in extracts from COLO 205 cells.



Immunohistochemistry (Formalin/PFA-fixed paraffin-embedded sections)

Immunohistochemical analysis of ACTG2 polyclonal antibody (Cat # PAB27015) in paraffin-embedded human muscle tissue.

Specification

Product Description	Rabbit polyclonal antibody raised against synthetic peptide of ACTG2.
Immunogen	A synthetic peptide corresponding to human ACTG2.
Host	Rabbit
Theoretical MW (kDa)	45
Reactivity	Human, Mouse, Rat
Specificity	ACTG2 polyclonal antibody detects endogenous levels of ACTG2 protein.
Form	Liquid

Purification	Antigen affinity purification
Concentration	1 mg/mL
Recommend Usage	Western Blot (1:500-1:1000) Immunohistochemistry (1:50-1:200) Immunofluorescence (1:50-1:200) The optimal working dilution should be determined by the end user.
Storage Buffer	In PBS, pH 7.2 (0.05% sodium azide)
Storage Instruction	Store at 4°C. For long term storage store at -20°C. Aliquot to avoid repeated freezing and thawing.
Note	This product contains sodium azide: a POISONOUS AND HAZARDOUS SUBSTANCE which should be handled by trained staff only.

Applications

- Western Blot (Cell lysate)

Western blot analysis of ACTG2 polyclonal antibody (Cat # PAB27015) in extracts from COLO 205 cells.

- Immunohistochemistry (Formalin/PFA-fixed paraffin-embedded sections)

Immunohistochemical analysis of ACTG2 polyclonal antibody (Cat # PAB27015) in paraffin-embedded human muscle tissue.

- Enzyme-linked Immunoabsorbent Assay

Gene Info — ACTG2

Entrez GeneID	72
Protein Accession#	P63267
Gene Name	ACTG2
Gene Alias	ACT, ACTA3, ACTE, ACTL3, ACTSG
Gene Description	actin, gamma 2, smooth muscle, enteric
Omim ID	102545
Gene Ontology	Hyperlink

Gene Summary

Actins are highly conserved proteins that are involved in various types of cell motility, and maintenance of the cytoskeleton. In vertebrates, three main groups of actin isoforms, alpha, beta and gamma have been identified. The alpha actins are found in muscle tissues and are a major constituent of the contractile apparatus. The beta and gamma actins co-exist in most cell types as components of the cytoskeleton, and as mediators of internal cell motility. Actin, gamma 2, encoded by this gene, is a smooth muscle actin found in enteric tissues. [provided by RefSeq]

Other Designations

actin, gamma 2|actin-like protein|alpha-actin 3|smooth muscle gamma actin

Pathway

- [Vascular smooth muscle contraction](#)

Disease

- [Cholestasis](#)
- [Pre-Eclampsia](#)
- [Pregnancy Complications](#)