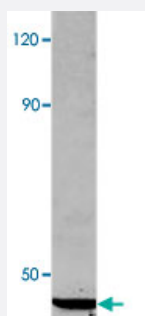


ACTB/ACTG1 polyclonal antibody

Catalog # PAB27013

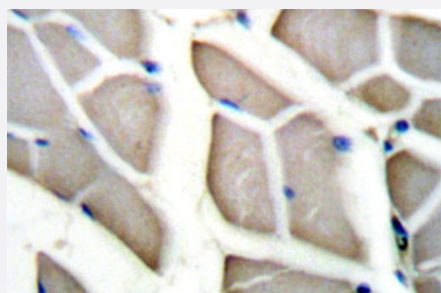
Size 100 uL

Applications



Western Blot (Cell lysate)

Western blot analysis of ACTB/ACTG1 polyclonal antibody (Cat # PAB27013) in extracts from Raw264.7 cells at 1:500 dilution.



Immunohistochemistry (Formalin/PFA-fixed paraffin-embedded sections)

Immunohistochemical analysis of ACTB/ACTG1 polyclonal antibody (Cat # PAB27013) in paraffin-embedded human skeletal muscle tissue.

Specification

Product Description	Rabbit polyclonal antibody raised against synthetic peptide of ACTB/ACTG1.
Immunogen	A synthetic peptide corresponding to human ACTB/ACTG1.
Host	Rabbit
Theoretical MW (kDa)	45
Reactivity	Human, Mouse, Rat
Specificity	ACTB/ACTG1 polyclonal antibody detects endogenous levels of ACTB/ACTG1 protein.
Form	Liquid

Purification	Antigen affinity purification
Recommend Usage	Western Blot (1:500-1:1000) Immunohistochemistry (1:50-1:200) The optimal working dilution should be determined by the end user.
Storage Buffer	In PBS, pH 7.2 (0.09% sodium azide)
Storage Instruction	Store at 4°C. For long term storage store at -20°C. Aliquot to avoid repeated freezing and thawing.
Note	This product contains sodium azide: a POISONOUS AND HAZARDOUS SUBSTANCE which should be handled by trained staff only.

Applications

- Western Blot (Cell lysate)

Western blot analysis of ACTB/ACTG1 polyclonal antibody (Cat # PAB27013) in extracts from Raw264.7 cells at 1:500 dilution.

- Immunohistochemistry (Formalin/PFA-fixed paraffin-embedded sections)

Immunohistochemical analysis of ACTB/ACTG1 polyclonal antibody (Cat # PAB27013) in paraffin-embedded human skeletal muscle tissue.

- Enzyme-linked Immunoabsorbent Assay

Gene Info — ACTB

Entrez GeneID	60
Protein Accession#	P60709 (Gene ID : 60);P63261 (Gene ID : 71)
Gene Name	ACTB
Gene Alias	PS1TP5BP1
Gene Description	actin, beta
Omim ID	102630
Gene Ontology	Hyperlink
Gene Summary	This gene encodes one of six different actin proteins. Actins are highly conserved proteins that are involved in cell motility, structure, and integrity. This actin is a major constituent of the contractile apparatus and one of the two nonmuscle cytoskeletal actins. [provided by RefSeq]

Other Designations

PS1TP5-binding protein 1|actin, cytoplasmic 1|beta actin|beta cytoskeletal actin

Gene Info — ACTG1

Entrez GeneID

[71](#)

Protein Accession#

[P60709 \(Gene ID : 60\);P63261 \(Gene ID : 71\)](#)

Gene Name

ACTG1

Gene Alias

ACT, ACTG, DFNA20, DFNA26

Gene Description

actin, gamma 1

Omim ID

[102560 604717](#)

Gene Ontology

[Hyperlink](#)

Gene Summary

Actins are highly conserved proteins that are involved in various types of cell motility, and maintenance of the cytoskeleton. In vertebrates, three main groups of actin isoforms, alpha, beta and gamma have been identified. The alpha actins are found in muscle tissues and are a major constituent of the contractile apparatus. The beta and gamma actins co-exist in most cell types as components of the cytoskeleton, and as mediators of internal cell motility. Actin, gamma 1, encoded by this gene, is a cytoplasmic actin found in nonmuscle cells. [provided by RefSeq]

Other Designations

actin, cytoplasmic 2|actin, gamma 1 propeptide|cytoskeletal gamma-actin

Pathway

- [Adherens junction](#)
- [Adherens junction](#)
- [Arrhythmogenic right ventricular cardiomyopathy \(ARVC\)](#)
- [Arrhythmogenic right ventricular cardiomyopathy \(ARVC\)](#)
- [Focal adhesion](#)
- [Focal adhesion](#)
- [Hypertrophic cardiomyopathy \(HCM\)](#)
- [Hypertrophic cardiomyopathy \(HCM\)](#)
- [Leukocyte transendothelial migration](#)

- [Leukocyte transendothelial migration](#)
- [Pathogenic Escherichia coli infection - EHEC](#)
- [Pathogenic Escherichia coli infection - EHEC](#)
- [Regulation of actin cytoskeleton](#)
- [Regulation of actin cytoskeleton](#)
- [Tight junction](#)
- [Tight junction](#)
- [Vibrio cholerae infection](#)
- [Vibrio cholerae infection](#)

Disease

- [Breast cancer](#)
- [Breast Neoplasms](#)