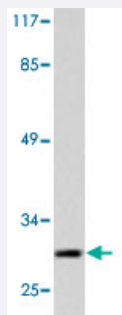


# YWHAZ polyclonal antibody

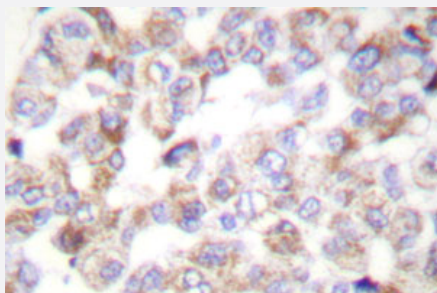
Catalog # PAB27012      Size 100 uL

## Applications



### Western Blot (Cell lysate)

Western blot analysis of YWHAZ polyclonal antibody (Cat # PAB27012) in extracts from 293 cells treated with Forskolin 40 nM 30' and NIH/3T3 cells treated with PMA 250 ng/mL 5'.



### Immunohistochemistry (Formalin/PFA-fixed paraffin-embedded sections)

Immunohistochemical analysis of YWHAZ polyclonal antibody (Cat # PAB27012) in paraffin-embedded human breast carcinoma tissue.

## Specification

<b>Product Description</b>	Rabbit polyclonal antibody raised against synthetic peptide of YWHAZ.
<b>Immunogen</b>	A synthetic peptide corresponding to human YWHAZ.
<b>Host</b>	Rabbit
<b>Theoretical MW (kDa)</b>	28
<b>Reactivity</b>	Human, Mouse, Rat
<b>Specificity</b>	YWHAZ polyclonal antibody detects endogenous levels of YWHAZ protein.
<b>Form</b>	Liquid

<b>Purification</b>	Antigen affinity purification
<b>Concentration</b>	1 mg/mL
<b>Recommend Usage</b>	Western Blot (1:500-1:1000) Immunohistochemistry (1:50-1:200) Immunofluorescence (1:50-1:200) Immunoprecipitor (1:50-1:200) The optimal working dilution should be determined by the end user.
<b>Storage Buffer</b>	In PBS, pH 7.2 (0.05% sodium azide)
<b>Storage Instruction</b>	Store at 4°C. For long term storage store at -20°C. Aliquot to avoid repeated freezing and thawing.
<b>Note</b>	This product contains sodium azide: a POISONOUS AND HAZARDOUS SUBSTANCE which should be handled by trained staff only.

## Applications

- Western Blot (Cell lysate)

Western blot analysis of YWHAZ polyclonal antibody (Cat # PAB27012) in extracts from 293 cells treated with Forskolin 40 nM 30' and NIH/3T3 cells treated with PMA 250 ng/mL 5'.

- Immunohistochemistry (Formalin/PFA-fixed paraffin-embedded sections)

Immunohistochemical analysis of YWHAZ polyclonal antibody (Cat # PAB27012) in paraffin-embedded human breast carcinoma tissue.

- Immunofluorescence

- Immunoprecipitation

- Enzyme-linked Immunoabsorbent Assay

## Gene Info — YWHAZ

<b>Entrez GeneID</b>	<a href="#">7534</a>
<b>Protein Accession#</b>	<a href="#">P63104</a>
<b>Gene Name</b>	YWHAZ
<b>Gene Alias</b>	KCIP-1, MGC111427, MGC126532, MGC138156

Gene Description	tyrosine 3-monooxygenase/tryptophan 5-monooxygenase activation protein, zeta polypeptide
Omim ID	<a href="#">601288</a>
Gene Ontology	<a href="#">Hyperlink</a>
Gene Summary	<p>This gene product belongs to the 14-3-3 family of proteins which mediate signal transduction by binding to phosphoserine-containing proteins. This highly conserved protein family is found in both plants and mammals, and this protein is 99% identical to the mouse, rat and sheep orthologs. The encoded protein interacts with IRS1 protein, suggesting a role in regulating insulin sensitivity. Several transcript variants that differ in the 5' UTR but that encode the same protein have been identified for this gene. [provided by RefSeq]</p>
Other Designations	14-3-3 protein/cytosolic phospholipase A2 14-3-3 zeta OTTHUMP00000165851 OTTHUMP00000165852 OTTHUMP00000165854 OTTHUMP00000165858 OTTHUMP00000165859 OTTHUMP00000165860 phospholipase A2 protein kinase C inhibitor protein-1 tyrosine 3/tryptophan 5 -monooxygenase

## Pathway

- [Cell cycle](#)
- [Neurotrophin signaling pathway](#)
- [Pathogenic Escherichia coli infection - EHEC](#)

## Disease

- [Alzheimer disease](#)
- [Autistic Disorder](#)
- [Genetic Predisposition to Disease](#)
- [Tobacco Use Disorder](#)