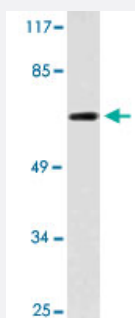


ME3 polyclonal antibody

Catalog # PAB27010 Size 100 uL

Applications



Western Blot (Cell lysate)

Western blot analysis of Raw 264.7 cell lysate with ME3 polyclonal antibody (Cat # PAB27010).



Immunohistochemistry (Formalin/PFA-fixed paraffin-embedded sections)

Immunohistochemical analysis of paraffin-embedded human brain tissue using ME3 polyclonal antibody (Cat # PAB27010).

Specification

Product Description	Rabbit polyclonal antibody raised against synthetic peptide of ME3.
Immunogen	A synthetic peptide corresponding to human ME3.
Host	Rabbit
Theoretical MW (kDa)	67
Reactivity	Human, Mouse
Specificity	ME3 polyclonal antibody detects endogenous levels of ME3 protein.
Form	Liquid

Purification	Antigen affinity purification
Concentration	1 mg/mL
Recommend Usage	Western Blot (1:500-1:1000) Immunohistochemistry (1:50-1:200) The optimal working dilution should be determined by the end user.
Storage Buffer	In PBS, pH 7.2 (0.05% sodium azide)
Storage Instruction	Store at 4°C. For long term storage store at -20°C. Aliquot to avoid repeated freezing and thawing.
Note	This product contains sodium azide: a POISONOUS AND HAZARDOUS SUBSTANCE which should be handled by trained staff only.

Applications

- Western Blot (Cell lysate)

Western blot analysis of Raw 264.7 cell lysate with ME3 polyclonal antibody (Cat # PAB27010).

- Immunohistochemistry (Formalin/PFA-fixed paraffin-embedded sections)

Immunohistochemical analysis of paraffin-embedded human brain tissue using ME3 polyclonal antibody (Cat # PAB27010).

Gene Info — ME3

Entrez GeneID	10873
Protein Accession#	Q16798
Gene Name	ME3
Gene Alias	FLJ34862
Gene Description	malic enzyme 3, NADP(+)-dependent, mitochondrial
Omim ID	604626
Gene Ontology	Hyperlink

Gene Summary

Malic enzyme catalyzes the oxidative decarboxylation of malate to pyruvate using either NAD⁺ or NADP⁺ as a cofactor. Mammalian tissues contain 3 distinct isoforms of malic enzyme: a cytosolic NADP(+)-dependent isoform, a mitochondrial NADP(+)-dependent isoform, and a mitochondrial NAD(+)-dependent isoform. This gene encodes a mitochondrial NADP(+)-dependent isoform. Multiple alternatively spliced transcript variants have been found for this gene, but the biological validity of some variants has not been determined. [provided by RefSeq]

Other Designations

NADP-ME|malate dehydrogenase|malic enzyme, NADP+-dependent, mitochondrial|mitochondria
| NADP(+)-dependent malic enzyme 3|pyruvic-malic carboxylase

Pathway

- [Biosynthesis of alkaloids derived from histidine and purine](#)
- [Biosynthesis of alkaloids derived from ornithine](#)
- [Biosynthesis of alkaloids derived from shikimate pathway](#)
- [Biosynthesis of alkaloids derived from terpenoid and polyketide](#)
- [Biosynthesis of terpenoids and steroids](#)
- [Carbon fixation in photosynthetic organisms](#)
- [Metabolic pathways](#)
- [Pyruvate metabolism](#)

Disease

- [Tobacco Use Disorder](#)