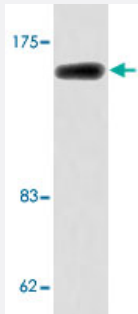


MYOM2 polyclonal antibody

Catalog # PAB27008 Size 100 uL

Applications



Western Blot (Cell lysate)

Western blot analysis of COS-7 cell lysate with MYOM2 polyclonal antibody (Cat # PAB27008).

Specification

Product Description	Rabbit polyclonal antibody raised against synthetic peptide of MYOM2.
Immunogen	A synthetic peptide corresponding to human MYOM2.
Host	Rabbit
Theoretical MW (kDa)	165
Reactivity	Human, Mouse
Specificity	MYOM2 polyclonal antibody detects endogenous levels of MYOM2 protein.
Form	Liquid
Purification	Antigen affinity purification
Concentration	1 mg/mL
Recommend Usage	Western Blot (1:500-1:1000) The optimal working dilution should be determined by the end user.
Storage Buffer	In PBS, pH 7.2 (0.05% sodium azide)

Storage Instruction

Store at 4°C. For long term storage store at -20°C.
Aliquot to avoid repeated freezing and thawing.

Note

This product contains sodium azide: a POISONOUS AND HAZARDOUS SUBSTANCE which should be handled by trained staff only.

Applications

- Western Blot (Cell lysate)

Western blot analysis of COS-7 cell lysate with MYOM2 polyclonal antibody (Cat # PAB27008).

Gene Info — MYOM2

Entrez GeneID[9172](#)**Protein Accession#**[P54296](#)**Gene Name**

MYOM2

Gene Alias

TTNAP

Gene Description

myomesin (M-protein) 2, 165kDa

Omim ID[603509](#)**Gene Ontology**[Hyperlink](#)**Gene Summary**

The giant protein titin, together with its associated proteins, interconnects the major structure of sarcomeres, the M bands and Z discs. The C-terminal end of the titin string extends into the M line, where it binds tightly to M-band constituents of apparent molecular masses of 190 kD and 165 kD. The predicted MYOM2 protein contains 1,465 amino acids. Like MYOM1, MYOM2 has a unique N-terminal domain followed by 12 repeat domains with strong homology to either fibronectin type I or immunoglobulin C2 domains. Protein sequence comparisons suggested that the MYOM2 protein and bovine M protein are identical. [provided by RefSeq]

Other Designations

M-band protein|myomesin (M-protein) 2 (165kD)|myomesin 2|titin-associated protein, 165 kD