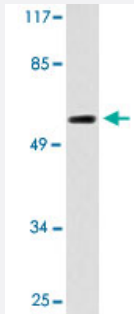


DCT polyclonal antibody

Catalog # PAB27005 Size 100 uL

Applications



Western Blot (Cell lysate)

Western blot analysis of K-562 cell lysate with DCT polyclonal antibody (Cat # PAB27005).

Specification

Product Description Rabbit polyclonal antibody raised against synthetic peptide of DCT.

Immunogen A synthetic peptide corresponding to human DCT.

Host Rabbit

Theoretical MW (kDa) 60

Reactivity Human, Mouse

Specificity DCT polyclonal antibody detects endogenous levels of DCT protein.

Form Liquid

Purification Antigen affinity purification

Concentration 1 mg/mL

Recommend Usage Western Blot (1:500-1:1000)
Immunofluorescence (1:50-1:200)
The optimal working dilution should be determined by the end user.

Storage Buffer In PBS, pH 7.2 (0.05% sodium azide)

Storage Instruction

Store at 4°C. For long term storage store at -20°C.
Aliquot to avoid repeated freezing and thawing.

Note

This product contains sodium azide: a POISONOUS AND HAZARDOUS SUBSTANCE which should be handled by trained staff only.

Applications

- Western Blot (Cell lysate)

Western blot analysis of K-562 cell lysate with DCT polyclonal antibody (Cat # PAB27005).

- Immunofluorescence

Gene Info — DCT

Entrez GeneID [1638](#)

Protein Accession# [P40126](#)

Gene Name DCT

Gene Alias TYRP2

Gene Description dopachrome tautomerase (dopachrome delta-isomerase, tyrosine-related protein 2)

Omim ID [191275](#)

Gene Ontology [Hyperlink](#)

Gene Summary O

Other Designations Dopachrome tautomerase (dopachrome delta-isomerase; tyrosinase-related protein 2)|OTTHUM P00000018553

Pathway

- [Melanogenesis](#)
- [Metabolic pathways](#)
- [Tyrosine metabolism](#)

Disease

- [Intervertebral Disk Displacement](#)