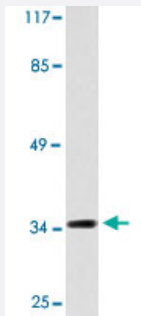


ELOVL1 polyclonal antibody

Catalog # PAB26984 Size 100 uL

Applications



Western Blot (Cell lysate)

Western blot analysis of Jurkat cell lysate with ELOVL1 polyclonal antibody (Cat # PAB26984).

Specification

Product Description	Rabbit polyclonal antibody raised against synthetic peptide of ELOVL1.
Immunogen	A synthetic peptide corresponding to human ELOVL1.
Host	Rabbit
Theoretical MW (kDa)	35
Reactivity	Human, Mouse
Specificity	ELOVL1 polyclonal antibody detects endogenous levels of ELOVL1 protein.
Form	Liquid
Purification	Antigen affinity purification
Concentration	1 mg/mL
Recommend Usage	Western Blot (1:500-1:1000) The optimal working dilution should be determined by the end user.
Storage Buffer	In PBS, pH 7.2 (0.05% sodium azide)

Storage Instruction

Store at 4°C. For long term storage store at -20°C.
Aliquot to avoid repeated freezing and thawing.

Note

This product contains sodium azide: a POISONOUS AND HAZARDOUS SUBSTANCE which should be handled by trained staff only.

Applications

- Western Blot (Cell lysate)

Western blot analysis of Jurkat cell lysate with ELOVL1 polyclonal antibody (Cat # PAB26984).

Gene Info — ELOVL1

Entrez GeneID[64834](#)**Protein Accession#**[Q9BW60](#)**Gene Name**

ELOVL1

Gene Alias

CGI-88, Ssc1

Gene Description

elongation of very long chain fatty acids (FEN1/Elo2, SUR4/Elo3, yeast)-like 1

Gene Ontology[Hyperlink](#)**Gene Summary**

SUR4/Elo3

Other Designations

OTTHUMP00000008574|elongation of very long chain fatty acids-like 1