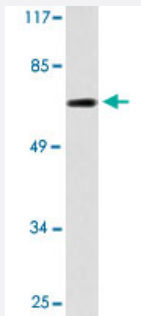


DDX55 polyclonal antibody

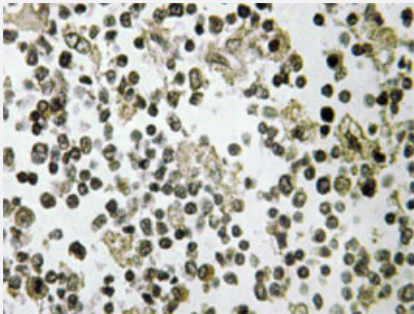
Catalog # PAB26980 Size 100 uL

Applications



Western Blot (Cell lysate)

Western blot analysis of HeLa cell lysate with DDX55 polyclonal antibody (Cat # PAB26980).



Immunohistochemistry (Formalin/PFA-fixed paraffin-embedded sections)

Immunohistochemical analysis of paraffin-embedded human lymph node tissue using DDX55 polyclonal antibody (Cat # PAB26980).

Specification

Product Description	Rabbit polyclonal antibody raised against synthetic peptide of DDX55.
Immunogen	A synthetic peptide corresponding to human DDX55.
Host	Rabbit
Theoretical MW (kDa)	68
Reactivity	Human, Mouse
Specificity	DDX55 polyclonal antibody detects endogenous levels of DDX55 protein.
Form	Liquid

Purification	Antigen affinity purification
Concentration	1 mg/mL
Recommend Usage	Western Blot (1:500-1:1000) Immunohistochemistry (1:50-1:200) The optimal working dilution should be determined by the end user.
Storage Buffer	In PBS, pH 7.2 (0.05% sodium azide)
Storage Instruction	Store at 4°C. For long term storage store at -20°C. Aliquot to avoid repeated freezing and thawing.
Note	This product contains sodium azide: a POISONOUS AND HAZARDOUS SUBSTANCE which should be handled by trained staff only.

Applications

- Western Blot (Cell lysate)

Western blot analysis of HeLa cell lysate with DDX55 polyclonal antibody (Cat # PAB26980).

- Immunohistochemistry (Formalin/PFA-fixed paraffin-embedded sections)

Immunohistochemical analysis of paraffin-embedded human lymph node tissue using DDX55 polyclonal antibody (Cat # PAB26980).

Gene Info — DDX55

Entrez GeneID	57696
Protein Accession#	Q8NHQ9
Gene Name	DDX55
Gene Alias	FLJ16577, KIAA1595, MGC33209
Gene Description	DEAD (Asp-Glu-Ala-Asp) box polypeptide 55
Gene Ontology	Hyperlink

Gene Summary

This gene encodes a member of the DEAD box protein family. DEAD box proteins, characterized by the conserved motif Asp-Glu-Ala-Asp (DEAD), are putative RNA helicases. They are implicated in a number of cellular processes involving alteration of RNA secondary structure, such as translation initiation, nuclear and mitochondrial splicing, and ribosome and spliceosome assembly. Based on their distribution patterns, some members of this family are believed to be involved in embryogenesis, spermatogenesis, and cellular growth and division. Multiple alternatively spliced transcript variants have been found for this gene, but the biological validity of only one transcript has been confirmed. [provided by RefSeq]

Other Designations

-

Disease

- [Disease Progression](#)
- [Disease Susceptibility](#)
- [HIV Infections](#)