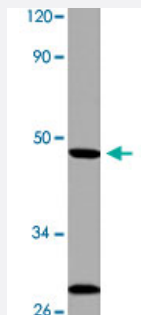


OPN3 polyclonal antibody

Catalog # PAB26963 Size 100 uL

Applications



Western Blot (Cell lysate)

Western blot analysis of HeLa cell lysate with OPN3 polyclonal antibody (Cat # PAB26963) at 1:500 dilution.

Specification

Product Description	Rabbit polyclonal antibody raised against synthetic peptide of OPN3.
Immunogen	A synthetic peptide corresponding to human OPN3.
Host	Rabbit
Theoretical MW (kDa)	~47.0
Reactivity	Human, Mouse
Specificity	OPN3 polyclonal antibody detects endogenous levels of OPN3 protein.
Form	Liquid
Purification	Antigen affinity purification
Recommend Usage	Western Blot (1:500-1:1000) Immunohistochemistry (1:50-1:200) Immunofluorescence (1:50-1:200) The optimal working dilution should be determined by the end user.
Storage Buffer	In PBS, pH 7.2 (0.09% sodium azide)

Storage Instruction

Store at 4°C. For long term storage store at -20°C.
Aliquot to avoid repeated freezing and thawing.

Note

This product contains sodium azide: a POISONOUS AND HAZARDOUS SUBSTANCE which should be handled by trained staff only.

Applications

- Western Blot (Cell lysate)

Western blot analysis of HeLa cell lysate with OPN3 polyclonal antibody (Cat # PAB26963) at 1:500 dilution.

- Immunohistochemistry

- Immunofluorescence

Gene Info — OPN3

Entrez GeneID[23596](#)**Protein Accession#**[Q9H1Y3](#)**Gene Name**

OPN3

Gene Alias

ECPN

Gene Description

opsin 3

Omim ID[606695](#)**Gene Ontology**[Hyperlink](#)**Gene Summary**

Opsins are members of the guanine nucleotide-binding protein (G protein)-coupled receptor superfamily. In addition to the visual opsins, mammals possess several photoreceptive non-visual opsins that are expressed in extraocular tissues. This gene, opsin 3, is strongly expressed in brain and testis and weakly expressed in liver, placenta, heart, lung, skeletal muscle, kidney, and pancreas. The gene may also be expressed in the retina. The protein has the canonical features of a photoreceptive opsin protein. [provided by RefSeq]

Other Designations

OTTHUMP00000037645[encephalopsin]opsin 3 (encephalopsin, panopsin)

Disease

- [Asthma](#)

- [Genetic Predisposition to Disease](#)
- [Multiple Sclerosis](#)