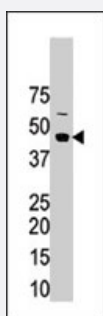


# STRADA polyclonal antibody

Catalog # PAB2696

Size 400 uL

## Applications



### Western Blot (Tissue lysate)

The STRADA polyclonal antibody (Cat # PAB2696) is used in Western blot to detect STRADA in mouse brain tissue lysate.

## Specification

<b>Product Description</b>	Rabbit polyclonal antibody raised against synthetic peptide of STRADA.
<b>Immunogen</b>	A synthetic peptide (conjugated with KLH) corresponding to N-terminus of human STRADA.
<b>Host</b>	Rabbit
<b>Reactivity</b>	Human
<b>Form</b>	Liquid
<b>Purification</b>	Protein G purification
<b>Recommend Usage</b>	Western Blot (1:1000) The optimal working dilution should be determined by the end user.
<b>Storage Buffer</b>	In PBS (0.09% sodium azide)
<b>Storage Instruction</b>	Store at 4°C. For long term storage store at -20°C. Aliquot to avoid repeated freezing and thawing.
<b>Note</b>	This product contains sodium azide: a POISONOUS AND HAZARDOUS SUBSTANCE which should be handled by trained staff only.

## Applications

- Western Blot (Tissue lysate)

The STRADA polyclonal antibody (Cat # PAB2696) is used in Western blot to detect STRADA in mouse brain tissue lysate.

## Gene Info — STRADA

Entrez GeneID [92335](#)

Protein Accession# [NP\\_001003787;Q7RTN6](#)

Gene Name STRADA

Gene Alias FLJ90524, LYK5, NY-BR-96, PMSE, STRAD, Stlk

Gene Description STE20-related kinase adaptor alpha

Omim ID [608626 611087](#)

Gene Ontology [Hyperlink](#)

**Gene Summary** The protein encoded by this gene contains a STE20-like kinase domain, but lacks several residues that are critical for catalytic activity, so it is termed a 'pseudokinase'. The protein forms a heterotrimeric complex with serine/threonine kinase 11 (STK11, also known as LKB1) and the scaffolding protein calcium binding protein 39 (CAB39, also known as MO25). The protein activates STK11 leading to the phosphorylation of both proteins and excluding STK11 from the nucleus. The protein is necessary for STK11-induced G1 cell cycle arrest. A mutation in this gene has been shown to result in polyhydramnios, megalencephaly, and symptomatic epilepsy (PMSE) syndrome. Multiple transcript variants encoding different isoforms have been found for this gene. Additional transcript variants have been described but their full-length nature is not known. [provided by RefSeq]

**Other Designations** STE20-like pseudokinase|STE20-related adaptor protein|protein kinase LYK5

## Publication Reference

- [Activation of the tumour suppressor kinase LKB1 by the STE20-like pseudokinase STRAD.](#)

Baas AF, Boudeau J, Sapkota GP, Smit L, Medema R, Morrice NA, Alessi DR, Clevers HC.

The EMBO Journal 2003 Jun; 22(12):3062.

- [Humoral immunity to human breast cancer: antigen definition and quantitative analysis of mRNA expression.](#)

Scanlan MJ, Gout I, Gordon CM, Williamson B, Stockert E, Gure AO, Jager D, Chen YT, Mackay A, O'Hare MJ, Old LJ.

Cancer Immunity 2001 Mar; 1:4.

## Pathway

- [mTOR signaling pathway](#)