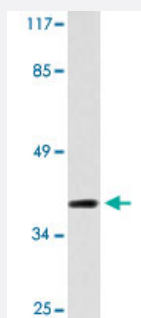


MORF4L1 polyclonal antibody

Catalog # PAB26945 Size 100 uL

Applications



Western Blot (Tissue lysate)

Western blot analysis of mouse kidney tissue with MORF4L1 polyclonal antibody (Cat # PAB26945).

Specification

Product Description	Rabbit polyclonal antibody raised against synthetic peptide of MORF4L1.
Immunogen	A synthetic peptide corresponding to human MORF4L1.
Host	Rabbit
Theoretical MW (kDa)	41
Reactivity	Human, Mouse
Specificity	MORF4L1 polyclonal antibody detects endogenous levels of MORF4L1 protein.
Form	Liquid
Purification	Affinity purification
Concentration	1 mg/mL
Recommend Usage	Western Blot (1:500-1:1000) Immunohistochemistry (1:50-1:200) Immunofluorescence (1:50-1:200) The optimal working dilution should be determined by the end user.

Storage Buffer	In PBS, pH 7.2 (0.05% sodium azide)
Storage Instruction	Store at 4°C. For long term storage store at -20°C. Aliquot to avoid repeated freezing and thawing.
Note	This product contains sodium azide: a POISONOUS AND HAZARDOUS SUBSTANCE which should be handled by trained staff only.

Applications

- Western Blot (Tissue lysate)

Western blot analysis of mouse kidney tissue with MORF4L1 polyclonal antibody (Cat # PAB26945).

- Immunohistochemistry

- Immunofluorescence

Gene Info — MORF4L1

Entrez GeneID	10933
Protein Accession#	Q9UBU8
Gene Name	MORF4L1
Gene Alias	Eaf3, FWP006, HsT17725, MGC10631, MORFRG15, MRG15, S863-6
Gene Description	mortality factor 4 like 1
Omim ID	607303
Gene Ontology	Hyperlink
Other Designations	MORF-related gene 15 MORF-related gene on chromosome 15

Disease

- [Tobacco Use Disorder](#)