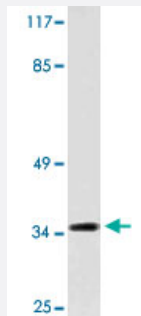


# MCL1 polyclonal antibody

Catalog # PAB26937      Size 100 uL

## Applications



### Western Blot (Cell lysate)

Western blot analysis of COS-7 cell lysate with MCL1 polyclonal antibody (Cat # PAB26937).

## Specification

<b>Product Description</b>	Rabbit polyclonal antibody raised against synthetic peptide of MCL1.
<b>Immunogen</b>	A synthetic peptide corresponding to human MCL1.
<b>Host</b>	Rabbit
<b>Theoretical MW (kDa)</b>	35
<b>Reactivity</b>	Human, Mouse
<b>Specificity</b>	MCL1 polyclonal antibody detects endogenous levels of MCL1 protein.
<b>Form</b>	Liquid
<b>Purification</b>	Affinity purification
<b>Concentration</b>	1 mg/mL
<b>Recommend Usage</b>	Western Blot (1:500-1:1000) The optimal working dilution should be determined by the end user.
<b>Storage Buffer</b>	In PBS, pH 7.2 (0.05% sodium azide)

**Storage Instruction**

Store at 4°C. For long term storage store at -20°C.  
Aliquot to avoid repeated freezing and thawing.

**Note**

This product contains sodium azide: a POISONOUS AND HAZARDOUS SUBSTANCE which should be handled by trained staff only.

## Applications

- Western Blot (Cell lysate)

Western blot analysis of COS-7 cell lysate with MCL1 polyclonal antibody (Cat # PAB26937).

## Gene Info — MCL1

**Entrez GeneID**[4170](#)**Protein Accession#**[Q07820](#)**Gene Name**

MCL1

**Gene Alias**

BCL2L3, EAT, MCL1L, MCL1S, MGC104264, MGC1839, TM

**Gene Description**

myeloid cell leukemia sequence 1 (BCL2-related)

**Omim ID**[159552](#)**Gene Ontology**[Hyperlink](#)**Gene Summary**

The protein encoded by this gene belongs to the Bcl-2 family. Alternative splicing occurs at this locus and two transcript variants encoding distinct isoforms have been identified. The longer gene product (isoform 1) enhances cell survival by inhibiting apoptosis while the alternatively spliced shorter gene product (isoform 2) promotes apoptosis and is death-inducing. [provided by RefSeq]

**Other Designations**

OTTHUMP00000032794|OTTHUMP00000032795|induced myeloid leukemia cell differentiation protein Mcl-1|myeloid cell leukemia sequence 1|myeloid cell leukemia sequence 1, isoform 1

## Disease

- [Bile Duct Neoplasms](#)
- [Cardiovascular Diseases](#)
- [Cholangiocarcinoma](#)
- [Diabetes Mellitus](#)

- [Edema](#)
- [Genetic Predisposition to Disease](#)
- [Narcolepsy](#)
- [Tuberculosis](#)